

ALMT Annual Report and Accounts 2021-2022



**THE ANGUS LAWSON
MEMORIAL TRUST**

Registered charity number: 1117735



Contents

1	Message from the Chair
2	The people behind the ALMT
3-4	Responding to need and measuring impact
5	Principal activities
6	The grant making cycle
7	Income explained
8	What is Co-Funding?
9	Corporate partnerships
10	Bereavement support
11-24	The projects
25	Independent Examiner's report
26	Balance sheet
27	Statement of financial activities
28-30	Notes to the financial statements
31	Thank-you



Message from the Chair

During the turbulence of the past few years, the ALMT has remained a steadfast and committed champion for our small charity partners who continually strive to respond to the urgent and important needs of families. Our approach was tested again this year as we saw the upheaval caused by the Taliban takeover in Afghanistan, followed by the horrific effect of the war in Ukraine and the subsequent rise in the cost of living for families across the world.

Despite our natural desire to provide immediate emergency support, the ALMT Trustees spent many hours making sure that our response was measured and able to support children and young people for the longer term. This year we funded more projects targeted at the growing number of refugee and migrant children we see affected by conflict and trauma worldwide. We were pleased to be able to facilitate the delivery of summer activities for Ukrainian refugee children in Poland and Moldova, helping them to achieve a sense of normality in their new homes.

Our partnership with the team at RenaissanceRe continues to inspire and inform; challenging us to extend our reach and look to the future. Alongside our incredible network of co-funders and supporters this enables us to remain a proactive and accessible funder.

As we approached the end of the financial year, Silvie Tonello stepped down as Trust Director and joined the ALMT Board of Trustees. We are so grateful for Silvie's drive and enthusiasm over the past 10 years which has been an invaluable asset for the ALMT and we are excited to welcome her wealth of experience to the Board. Rebecca Pirt will take on the role of Trust Director and will be supported by Kate Richardson who joined the team as Grants Officer in September. Jenni Thomas OBE continues to provide essential and excellent grief and bereavement support for families.

Despite supporting over 31,000 children and young people in 17 different countries during 2022, the winter ahead looks bleak for many families with rising costs of living set to have a severe impact on children and young people. We are actively seeking to help families cope with this looming crisis into 2023.

With many thanks for your continued support.

Nick Lawson
ALMT Founder and Chair

The people behind the ALMT

The ALMT is a registered charity, number 1117735, governed by its Declaration of Trust and its Articles of Association. The ALMT partners with individuals and companies to provide targeted grants and support to organisations working towards its shared mission to improve the quality of life for the world's most marginalised children.

New Trustees can be recommended by an existing board or staff member and elected at a Trustees meeting. There is no minimum or maximum length of term. Trustees do not receive remuneration for their role.

Trustees:

- Fiona Fairbairn – Partners' Committee
- Debbie Hofmeyr – Partners' Committee
- Edward Hutton – Trustee
- Kara Lawson – Founder
- Nick Lawson – Founder, Chair
- Jonathan Potter – Treasurer
- Wasim Rehman - Partners' Committee
- Alex de Winton - Partners' Committee

Patron:

Jenni Thomas OBE

Employees:

- Silvie Tonello – Trust Director March 2011-September 2022
- Rebecca Pirt – Charity Partnerships and Grants Officer October 2019-September 2022
- Kate Richardson – Grants Officer September 2022-Present

The ALMT partners with individuals and companies to provide targeted grants and support to organisations working towards its shared mission to improve the quality of life for the world's most marginalised children.

Ravensmere,
Cryers Hill Road,
Cryers Hill,
High Wycombe,
HP15 6LJ

Registered Address:

Blythe and Co,
206 Upper
Richmond Road,
London,
SW14 8AH

Accountants:

HSBC,
1-3 Bishopsgate,
Cornhill,
London,
EC2N 3AQ

Bankers:

29 Harbour
Exchange Square,
London,
E14 9GE

Solicitors:

Responding to Need Measuring Impact 2021-2022

At the start of the year the following needs were identified as key areas for development within the ALMT portfolio of projects:

The ALMT aims to fund a diverse portfolio of projects. This year 39 projects were supported in 17 countries with 49% in the UK and 51% around the world.

Our projects deliver measurable outputs against nine of the United Nation's Sustainable Development Goals:

- 1 No Poverty
- 2 Zero Hunger
- 3 Good Health and Wellbeing
- 4 Quality Education
- 5 Gender Equality
- 6 Clean Water and Sanitation

- 8 Decent Work and Economic Growth
- 10 Reduced Inequalities
- 16 Peace Justice and Strong Institutions

The widening education gap between children and young people coming from disadvantaged backgrounds and their peers:

Funding was allocated to Quest for Learning and Southwark Community Education Charity in the UK whilst Children on the Edge, Tushinde, ChildHope, Lotus Outreach and the Mtaala Foundation continued their invaluable work around the world. A new project with Carers Worldwide helped children with disabilities enter education for the first time in Bangladesh.

The shortage of high quality interventions for children in their early years, particularly those from more vulnerable groups:

During the pandemic this age group was consistently overlooked around the world. Projects with Linda Norgrove Foundation, Restore Hope, Afrikids, Egmont Trust and Carers' Worldwide were approved to work with specific groups to improve children's development and chances early in life.

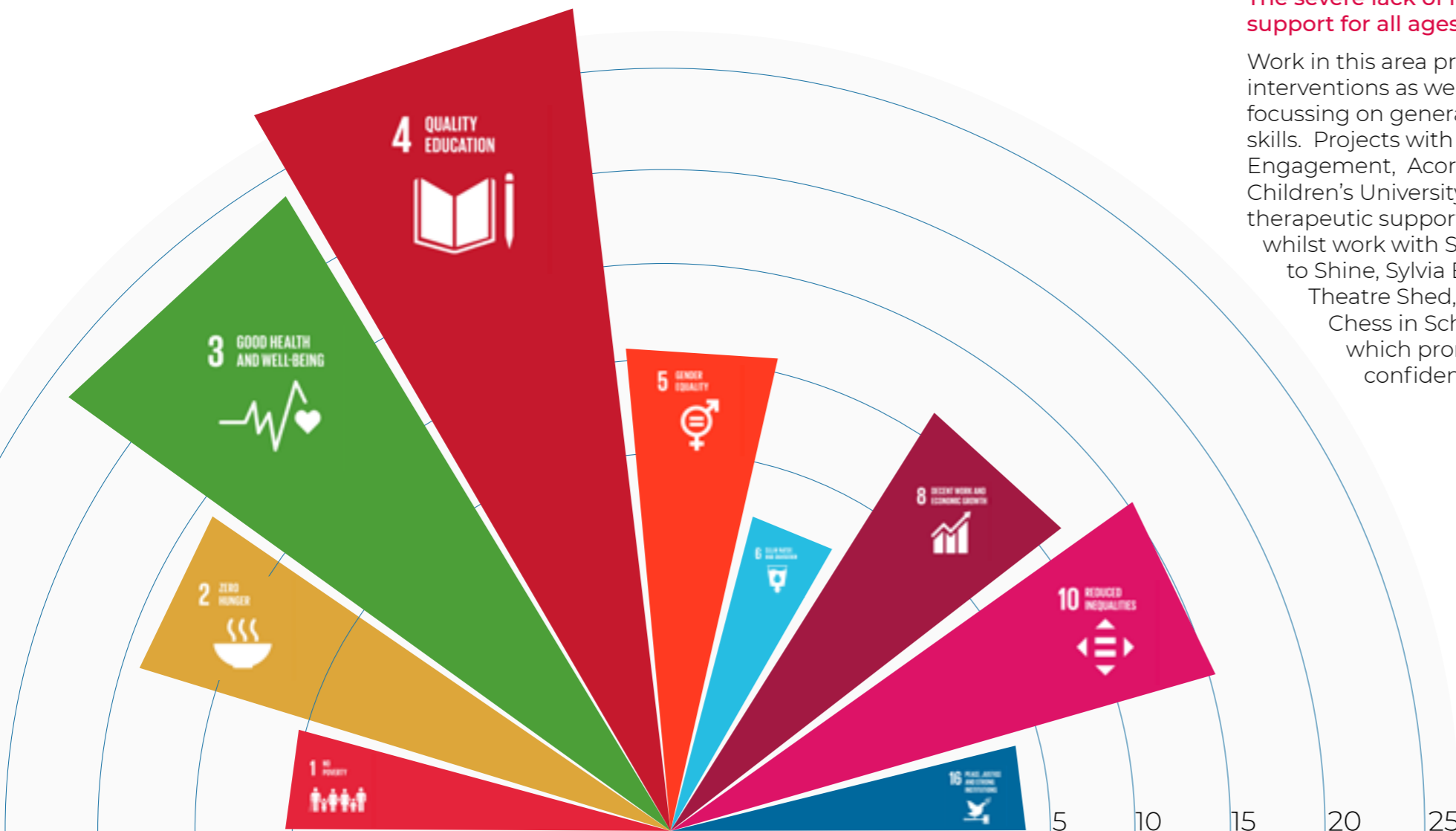
The severe lack of mental health support for all ages:

Work in this area provided therapeutic interventions as well as softer touch initiatives focussing on general wellbeing and social skills. Projects with Achieve, Change and Engagement, Acorns Project and Hull Children's University provided specific therapeutic support for young people whilst work with Sport Inspired, Chance to Shine, Sylvia Beaufoy Centre, The Theatre Shed, Immediate Theatre and Chess in Schools offered activities which promoted teamwork and confidence for participants.

Globally there has been a huge increase in the number of displaced and migrant children who are suffering as a result of conflict or poverty. Following the withdrawal of troops from Afghanistan and the advent of the war in Ukraine, the ALMT adapted and added a fourth priority area.

Support for refugee children and young people

Despite a natural desire to provide immediate emergency support, the ALMT was very aware that this situation would present challenges for years to come and therefore identified projects which would have a longer term impact. Our response went to Refugee Education UK, Apart of Me, Linda Norgrove Foundation, Mad-Aid, Mali Development Group, Alsama Project, Save a Child, Katherine Low Settlement and the Slowianka Centre in Gorzow, Poland.



Whilst aiming to support a wide range of projects, ALMT priorities shifted during the year in response to global events. The ability to remain agile has been of paramount importance.

Principal Activities

The Trust supports projects engaged in alleviating the suffering of children and young people in the UK and overseas, enabling them to hope for a brighter future. Funding is prioritised for grassroots partners which have an average annual income of no more than £1,000,000 over a five-year period.

Organisations new to the ALMT can apply for an annual grant up to £20,000. Existing partners can apply for a grant up to £25k for up to 3 years.

Applicants must be registered as a charity or Charitable Incorporated Organisation and have representation in the UK. The ALMT will consider applications from schools and school PTAs in the UK where funding will support disadvantaged children's learning outside school and benefit the wider community.

The ALMT looks for innovative and creative solutions to proven problems and selects projects with clearly identified objectives where the outcomes can be monitored

and evaluated. The Trust is most interested in projects that effect longer term change for the most disadvantaged young people. This ensures a positive impact for beneficiaries and a high social return on any investment made by the Trust and its donors. The ALMT aims to fund a wide variety of projects and maintain a balanced portfolio.

We work with partner organisations directly involved in project implementation. We do not fund grant-making bodies to make grants on our behalf. The ALMT accepts solicited applications through supporters, charity partners and members of the team. From time to time, the ALMT may reach out to organisations and invite them to apply.

Application process

Stage 1

A written application, cover sheet and detailed project budget

Stage 2

A meeting/ call/ project visit with a member of the ALMT Partners' committee.

Stage 3

Application is discussed evaluated and approved/ rejected at a Board meeting.

Applications considered:

Bereavement and palliative care for families, adults, children and young people.

Projects/initiatives that enable disadvantaged/ vulnerable children and young people to participate fully in society and increase social mobility.

Educational scholarships and learning support for children and young people.

Applications not considered:

Construction

Research

Disproportionate overhead and management costs

The promotion of religion

Party political activities

Grant Making Cycle

Reporting on the three scheduled ALMT Board meetings during financial year 2021-2022

The ALMT Co-Funding scheme accounted for 81% of grants made. The largest single grant awarded was £24,308 and the smallest was £3,187. Projects ran in 17 countries around the world.

Additional grants of £61,983 were made outside scheduled board meetings responding to the evacuation of Afghanistan and the war in Ukraine bringing the total grants made to £550,182

Grants made in the UK totalled:

£236,182

International grants totalled:

£252,017

The Trust made grants totalling £488,199 through the three scheduled board meetings during the financial year of 2021-22.

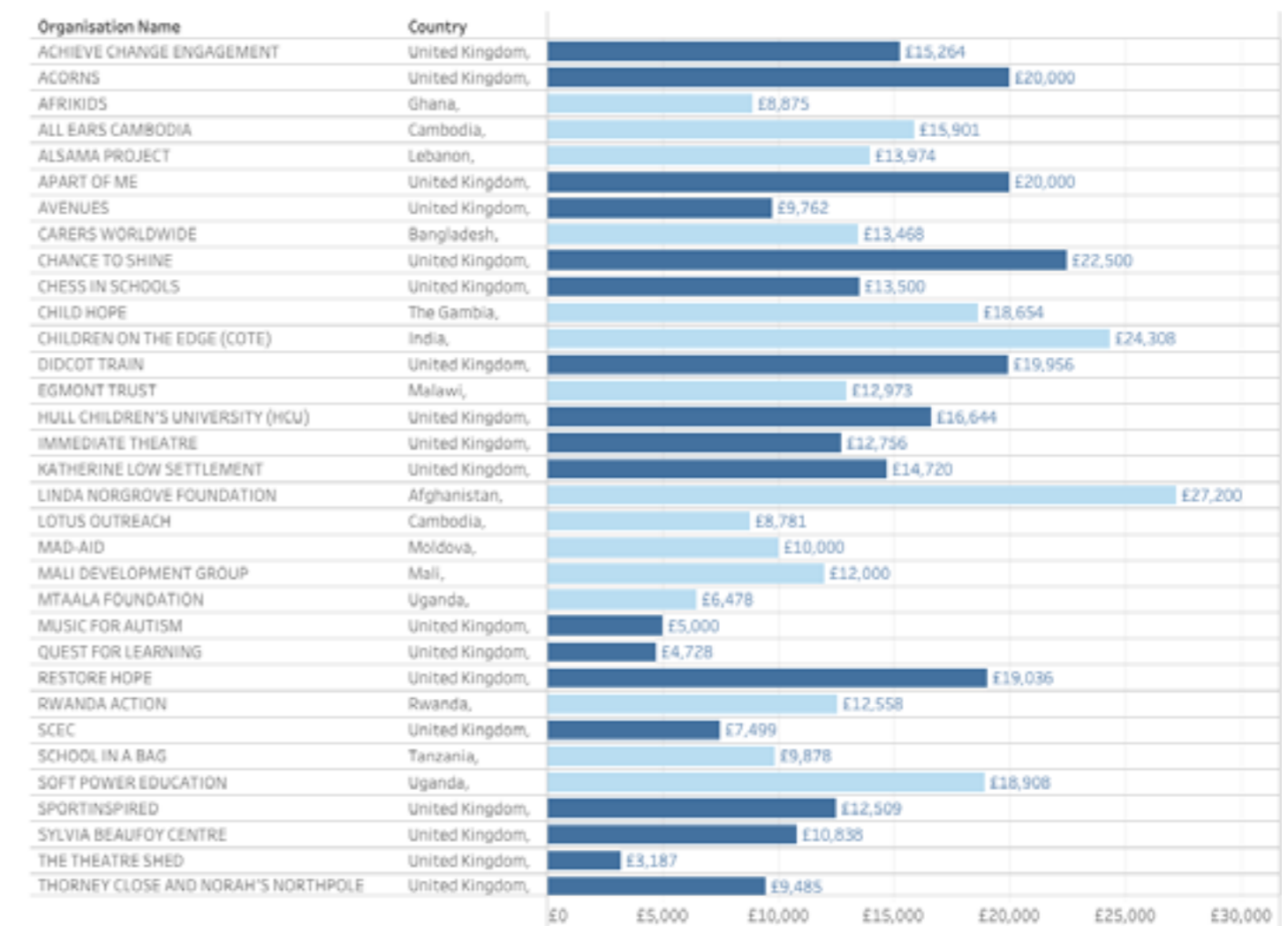


Image courtesy of CISC



Income Explained

Restricted income

£481,482

Restricted income includes income from individual co-funders, events that generate restricted co-funding for projects, partnerships with other trusts and foundations and corporate co-funding.

ALMT corporate partner RenaissanceRe continues to work closely with the ALMT team and this year £26,357 was received to co-fund specific projects.

ALMT continues to work closely with Rosemarie Nathanson Charitable Trust and Mac Bevan Charitable Trust to co-fund projects of mutual interest and received £14,145 from trusts and foundations this year.

The ALMT Board of Trustees make core cost contributions annually to fund the running of the ALMT and a percentage of the Gift Aid is restricted to cover any remaining core costs at the end of the year. In 2021/22 this totalled £13,169.

Unrestricted income

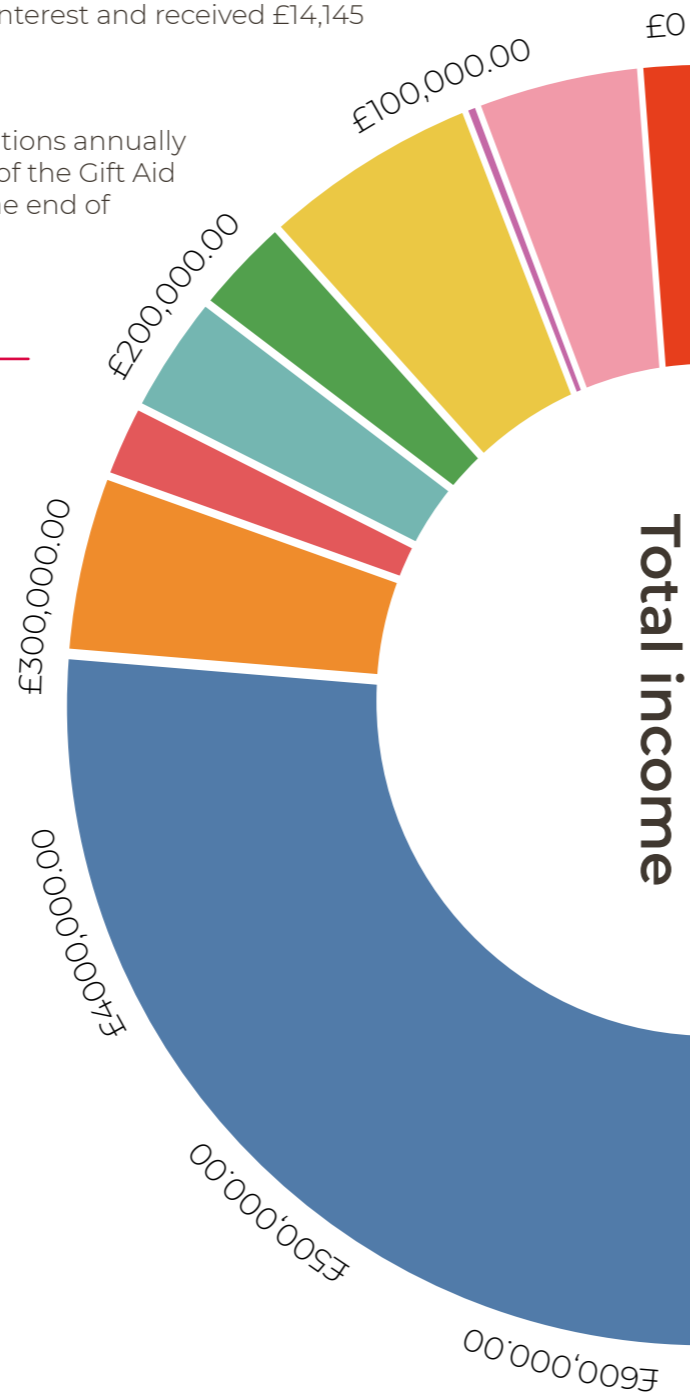
£128,931

Individuals consistently keep the ALMT sustainable with unrestricted regular donations, one-off support or annual lump sums totalling £71,557 in 2021-22.

Fundraising events included marathon runners and birthday events and totalled £11,179 in 2021-22.

Corporate donations come through a range of sources and contribute both directly to projects as well as to unrestricted income.

Gift Aid totalled £41,191 and this year £28,022 was used to fund ALMT charity partners.



- Trusts and Foundations
- Support cost contribution
- Investment
- Individuals
- Income for Gorzow
- Gift Aid
- Events
- Corporate
- Co-Funding

What is Co-Funding?

Co-Funding gives donors:

- Choice – Security – Flexibility -
- A Multiplier Effect - Tailored Reporting

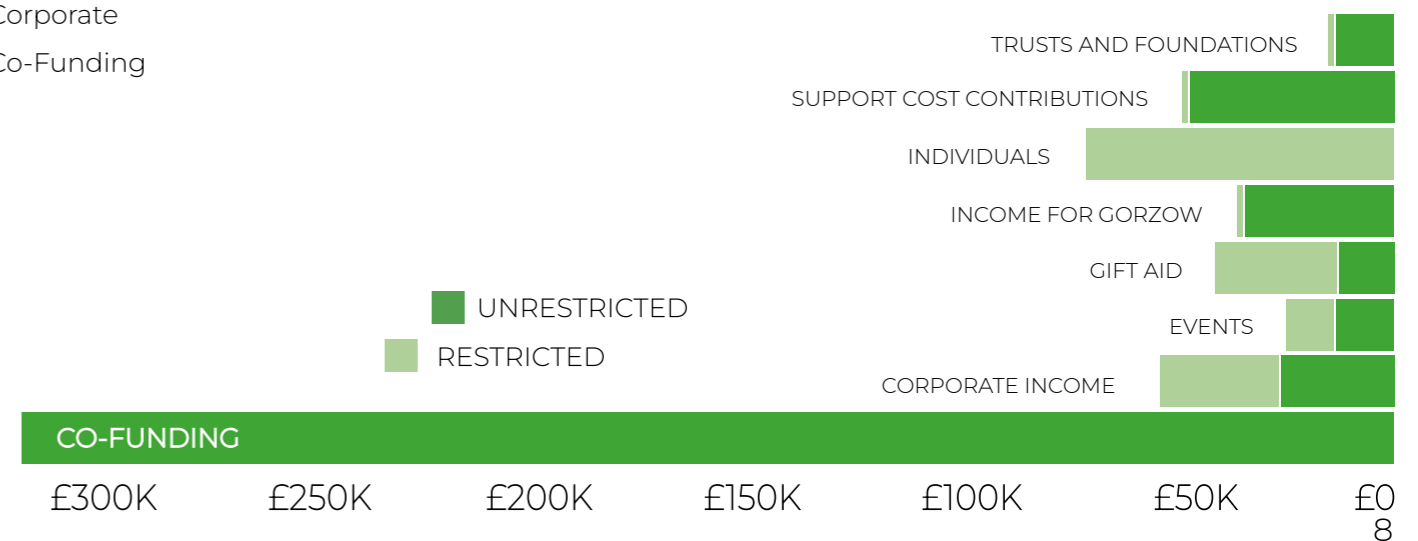
Co-Funding accounted for 67% of the ALMT's total income in 2021-2022. The ALMT funded 39 projects with charity partners working in 17 different countries worldwide. Co-Funding with the ALMT allows individuals, other trusts and foundations, and companies to contribute funds directly to individual, vetted and approved projects run by small, ground-breaking organisations working in a wide variety of areas.

This way of giving allows co-funders full access to project applications, budgets, project visits, and reports, from a wide portfolio of amazing small organisations who have been fully vetted by ALMT professionals. Co-funders can allocate 100% of their donation directly to a project and chat with the team at ALMT about specific areas of interest. Co-Funding can be on a regular basis, as and when a project is of interest, or within agreed annual limits.

The ALMT splits the grant amounts into percentages, dependent on how many co-funders are interested in supporting the project. This might be simply a 50/50 split or could include any number of co-funders donating smaller amounts to the ALMT to make up the full grant request.

At the end of the year, co-funders receive bespoke reports. The report provides graphs, statistics, highlights, case studies, images and feedback on the co-funded projects.

81% of the £550,182 granted to partner organisations was generated through Co-Funding.



Corporate Partnerships

The ALMT has benefitted from a fantastic corporate partnership with RenaissanceRe Holdings Ltd since 2017. The team at RenaissanceRe continues to be an engaged and proactive partner providing valuable and considered funding and introductions to potential partners.

A committed and diligent Corporate Social Responsibility (CSR) committee meet regularly at RenRe to discuss applications, reports and fundraising. The company also have a fantastic employee fundraising matching scheme in place, leveraging the teams efforts and raising even more for the ALMT and our partners.

This year, once again, the summer hike programme brought together the team at RenaissanceRe, ALMT Board members and key representatives from ALMT partner organisations, providing a valuable opportunity to share ideas and interests. It is such a pleasure

for us to share our relationships with our charity partners and offer the opportunity to meet the fantastic people behind the projects. The hikes have offered a unique platform upon which to forge real connections and understanding.

After each ALMT board meeting, newly funded projects and opportunities are presented to the CSR committee at RenRe where they are discussed and presented for potential Co-Funding. Often, the team may have already heard a presentation from the applicant or choose to focus a larger fundraising initiative on raising the funds needed.

The ALMT offers a unique corporate partnership opportunity, conducting all the due diligence and monitoring for projects and organisations supported, offering the experience and expertise necessary to ensure accountability in grant making, and also bringing together beneficiaries and employees.

This year RenaissanceRe committed £51,455 to nine projects supporting a range of initiatives with the ALMT.



Grief and Bereavement Support

“I once heard - and how true this is – that there is no right way to grieve. We do as we must in grief.”

Jenni Thomas OBE has provided ALMT funded grief and bereavement support to families for over 11 years. The following is taken from her annual report for 2021-22:

“During the recent pandemic death was frequently talked about and for some young people this caused anxiety. I would hear from children that dying was scary and made them worried about lots of things they hadn’t thought about before, such as, “could it happen to us, to my family?” Whilst Covid brought up difficult things to contemplate it was an opportunity for children to ask about death and dying. Death became a topic on which I was asked to provide guidance to schools and the wider community. The availability of professional support for the family with surviving children is woefully neglected. I am aware that when death is sudden and unexpected, I can provide the most help where the death of the child or parent has been traumatic. Families have explained that they were unable to get immediate support after the tragedy. Today it’s usual for parents to have to wait for four to six months after the sudden death of a child to receive bereavement support.

My work has therefore concentrated largely on supporting families as soon as possible after a death. By talking about the unbearable trauma, families can begin to make sense of what has happened and what is useful to know and do. I encourage these families to share the things they find hardest and are often most frightened about.

Initially when a child dies, I enable the parents to consider seeing their dead child. When possible and appropriate, suggesting that the siblings may also want to be included to say goodbye to a brother or sister. This sensitive area of care needs to be offered only after careful preparation is talked about professionally.

As work in this area becomes known about, I am approached in different crisis situations to offer guidance to grieving families. This contact may come through a school or from those working in healthcare or through friends that contact me. I’m now more able to have these important conversations from afar due to the availability of Zoom and the ALMT funded podcasts continue to be helpful for families and professionals.

In this past two years, sadly there is an increase in young people attempting to take their own life, often instigated through drug taking. The grief for the parents and the whole family when this happens is significant. My experience is that the loss of a child to suicide is especially complicated and difficult. I encouraged parents and children to reach out to charities who offer more long-term counselling for parents and children giving them opportunities to meet other young people after a suicide in the family.”

The Projects



Pages 12-24 provide a summary of all the projects supported by the ALMT in the year 1st October 2021 - 30th September 2022.

For each funded programme the page includes a summary of the activities, the partner organisation website, its geographical location, icons to demonstrate which SDGs the project responds to, and its duration.

The project pages will be divided into two sections: the main body of 39 grants decided at the tri-annual ALMT Board meetings followed by grants awarded outside the usual cycle of ALMT Board meetings in response to global events.



Cognitive behavioural therapy for young people

Country United Kingdom
Partner Achieve Change and Engagement
Funding £15,624
Duration 2021-2022

<https://a-c-e.org.uk>



Achieve, Change and Engagement (ACE) supports young people in Lancaster to improve their mental wellbeing and to build resilience. In the last three years there has been a 50% increase in the number of young people with identified mental health conditions in the UK.

This project enabled ACE to embed a cognitive behavioural therapist (CBT) to work with young people and to provide increased clinical supervision to staff and volunteers. CBT has been shown to be very effective in reducing anxiety and relieving symptoms of low mood. ACE works in community venues and GPs' surgeries in the most deprived areas to allow easy access to the service.

Supporting families affected by domestic abuse

Country United Kingdom
Partner Acorns Project
Funding £20,000
Duration 2022-2025

<https://www.acornsproject.org.uk>



During the pandemic, cases of domestic abuse rose significantly across the country and it is recognised that cases in rural areas can last up to 25% longer than in urban areas.

This project enabled Acorns to maintain their current provision within the Northumberland Recovery Service and continue to provide therapeutic support for 100-120 children and young people in Northumberland over 8-10 weeks enabling them to move forward with their lives in a positive way.



Image courtesy of Starfish Greathearts Foundation

Tackling disability

Country Ghana
Partner AfriKids
Funding £8,875
Duration 2021-2023

<http://www.afrikids.org>



In 2007, Afrikids established the Angus Lawson Child Rights Centre which has become a vital rehabilitation and physiotherapy centre for children with conditions like Cerebral Palsy. Afrikids works with families to help them understand their child's condition and improve movement and integration.

This final two-year project with the ALMT will enable Afrikids to ensure the future sustainability of two of their rehabilitation and physiotherapy centres for children with disabilities in Feo and Sirigu whilst maintaining support for 160 children and their parents..

Helping disadvantaged Khmer children to hear

Country Cambodia
Partner All Ears Cambodia
Funding £15,901
Duration 2019-2022

<http://allearscambodia.org>



All Ears Cambodia (AEC) provides free specialist aural healthcare to the people of Cambodia. The third and final year of this programme provided funding for two projects:

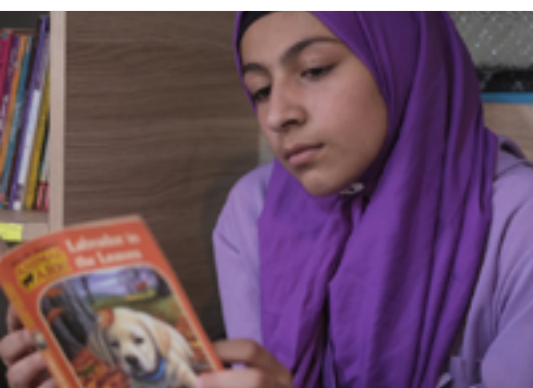
Auris Minor project: providing ear and hearing healthcare for severely disadvantaged Khmer children with multiple medical and social problems and increasing screening of school age children.

Yo-Yo Project: creating a family orientated rehabilitation and communication therapy service for hearing impaired Khmer children with a parallel education programme concerning ear and hearing health for professionals and children.

Alsama Minds'

Country Lebanon
Partner Alsama Project
Funding £13,974
Duration 2022-2023

<https://alsamaproject.com>



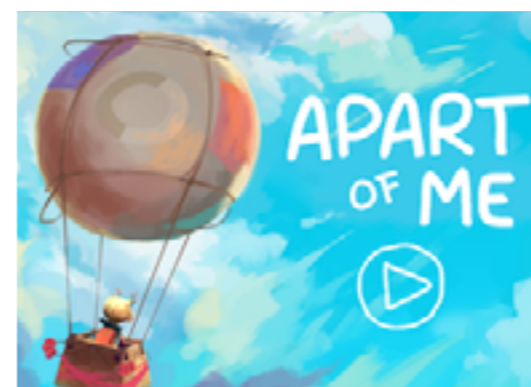
More than 50% of Syrian refugee children in Lebanon, which has the highest proportion of refugees anywhere in the world, are out of school. The Alsama Project has been formed to enable refugee children to access education, build physical and mental strength and stay safe.

This project will provide mental health and psychosocial support (MHPSS) for 200 Syrian teenagers in Bourj el Barajneh refugee camp, many of whom have psychological trauma resulting from the Syrian civil war. Alsama Minds' will improve students ability to engage with their education and reduce drop outs attributable to mental health issues.

A safer place

Country UK and Ukraine
Partner Apart of Me
Funding £20,000
Duration 2022-2023

<https://www.apartofme.app>



In the last two years, children around the world have experienced unprecedented levels of loss and trauma. Apart of Me combines design and technology with expertise in child psychology to create effective, engaging, and accessible psychological support for children experiencing loss or trauma.

This project will enable Apart of Me to co-design 'A Safer Place' with 30 children aged 5-11yrs and create a new digital resource that parents and vulnerable children who have experienced loss and trauma can use together. This digital tool (www.apartofme.app/nadiya/index.html) will then provide direct support to 500 vulnerable children, in the UK and overseas.

Community centres for children with special needs

Country Bangladesh
Partner Carers Worldwide
Funding £13,468
Duration 2022-2023

<https://carersworldwide.org>



In Bangladesh, just 11% of children with disabilities attend (mainstream) school and for those with particularly complex needs, there are no educational opportunities at all.

This project will establish two full-time Community Caring Centres (CCCs) in the Savar District of Bangladesh providing full-time, early intervention, therapeutic and educational activities for 60 children with disabilities, as well as providing mothers the chance to socialise, take time off from caring and earn income. By evidencing the benefits to local government Carers Worldwide hopes to embed this facility in the long term.

Cricket in hospital schools

Country United Kingdom
Partner Chance to Shine
Funding £22,500
Duration 2022-2023

<https://www.chancetoshine.org>



This project supports Chance to Shine and Capital Kids Cricket to continue their work offering cricket activities in hospital schools at Great Ormond Street Hospital, Evelina London Children's Hospital and Royal Marsden Teenage Cancer Unit and extend it to launch a programme at Lavender Walk Mental Health Unit in Chelsea.

Now in its final year, the project will continue to offer weekly cricket sessions to 120 children, aiming to give them respite from their treatment, reduce periods of isolation and improve physical and emotional wellbeing - bringing some normality to their lives.

Chess activities in Liverpool's primary schools

Country United Kingdom <https://www.chessinschools.co.uk>
Partner Chess in Schools and Communities
Funding £13,500
Duration 2021-2024



This three year partnership with Chess in Schools and Communities (CSC) will facilitate a three-year chess programme in six schools in Merseyside. Learning chess engenders valuable cognitive skills in children such as problem solving and logical thinking.

The weekly sessions will improve children's powers of concentration, instil the idea that actions have consequences, boost self-esteem, and teach children how to win and lose gracefully. There will be an end of year tournament at St Georges Hall for up to 40 state schools and 400 pupils and the opportunity to attend the 'Empower Girls Liverpool' chess tournament and the annual London Chess Classic.

Stimulating longer term educational change for children

Country The Gambia <https://www.childhope.org.uk>
Partner ChildHope
Funding £18,654
Duration 2021-2024



The Gambia is ranked 174/189 on the Human Development Index 2018, making it one of the poorest and least developed countries in the world. Approximately 18,000 children in The Gambia live in traditional, unregulated, residential education centres called 'Majalis' and many children end up leaving without a basic primary level education.

This project is improving education, safeguarding and living conditions for 270 children and young people in Majalis in the West Coast Region of The Gambia whilst advocating for greater support from government in the longer term.

Learning centres for Dalit Children

Country India <https://www.childrenontheedge.org>
Partner Children on the Edge
Funding £24,308
Duration 2021-2022



Dalit children in India suffered greatly during prolonged Covid lockdowns. Their beleaguered communities were overlooked for government support, and deepening poverty led to increased abuse, trafficking and child labour.

This project provides a final year of support to enable Children on the Edge, and their local partner Navjeevan Education and Social Welfare Society Digha (NESWSD), to deliver a much-needed and comprehensive back to school programme for 1000 children. Excitingly, this final grant from the ALMT also enables the project to embed secondary education for approximately 50 older children with the National Institute of Open Schooling (NIOS).

Youth champions programme

Country United Kingdom <https://www.didcottrain.org.uk>
Partner Didcot Train
Funding £19,956
Duration 2019-2022

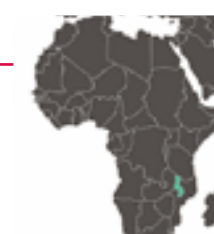


Didcot Train's Youth Champions' programme aims to build the confidence and skills of disadvantaged young people by providing activities that empower them to forge positive relationships, better community networks and increase educational participation.

The project works in all the secondary schools in Didcot providing group mentoring sessions for 90 young people and one-to-one support for 30 more. The programme will also run six 'Social Action' projects during the year alongside CV and interview workshops. These projects aim to build a sense of social responsibility and community involvement whilst also increasing young people's confidence and knowledge.

Vocational training and support for teenage mothers

Country Malawi <https://www.egmonttrust.org>
Partner Egmont Trust
Funding £12,973.00
Duration 2021-2022



Partnering with the Egmont Trust and New Beginnings based in Lilongwe, this project works to improve the lives of 220 expectant and young mothers, the 180 young children in their care and 100 adolescent girls who are either infected or affected by HIV through the Tiyende Naye psychosocial and vocational training programme.

The project offers eight months training in vocations such as plumbing; construction, hair braiding, cosmetology and tailoring. Following successful completion of their courses, trainees are organised into 34 business support groups which are supported with start-up materials to begin income generating activities.

Art therapy for children in the care system

Country United Kingdom <https://www.hullchildrensuniversity.com>
Partner Hull Children's University
Funding £15,120
Duration 2022-2023



Many children enter the care system having experienced significant trauma and abuse. Hull and East Yorkshire Children's University (HCU) are employing an art therapist to work with these children at the earliest possible stage to give them the best chance of recovering and achieving better long-term outcomes.

This pilot project aims to provide art therapy for 12 children during the course of the year, with each child receiving an average of 20 weeks of therapeutic support. During the course of the programme they will achieve improved mental health, social skills, self esteem and greater resilience.

Holidays for excluded young people

Country United Kingdom
Partner Immediate Theatre
Funding £12,756
Duration 2022-2023

<https://www.immediate-theatre.com>



Immediate Theatre's Interactions programme aims to meet the gap in support for young people (aged 13-19) who have been excluded from inner-city schools by engaging them in positive and creative activities. This project will take two groups of ten young people for a four-day trip to Clacton.

All participants are excluded or at-risk of exclusion from mainstream education settings. The trips include workshops on knife crime, self-defence, mental health and relationships, beach walks, bowling, amusements on the pier. The project aims to increase aspirations, goals and resilience for young people following the pandemic lockdowns of 2020-21.

Career and wellbeing support for young refugees

Country United Kingdom
Partner Katherine Low Settlement
Funding £14,720
Duration 2022-2023

<https://www.klsettlement.org>



Many young refugees have had a very turbulent childhood and are significantly behind their peers educationally. Subsequently they can face barriers to finding meaningful work. The Love to Learn programme works to broaden experiences and improve aspirations for these young people.

The project aims to build relationships with employers and offer career mentoring and guidance for 75 young people. Alongside employability and wellbeing sessions the project will provide on-going and bespoke advice and guidance for participants so that they are able to thrive in education.

Food parcels and university tuition for women and girls

Country Afghanistan
Partner Linda Norgrove Foundation
Funding £27,200
Duration 2022-2025

<https://lindanorgrovefoundation.org>



Women and children in Afghanistan are being disproportionately affected by the political, social, and financial upheavals since the Taliban takeover of August 2021. The ALMT funded two projects supporting women who have responsibility for children under three years old in the short-term, through the provision of 250 food and hygiene parcels.

Longer-term requirements in Afghanistan will also be addressed by supporting eight young women to study medicine. Funding will cover the entrance exams and university fees as well as an annual living allowance for them as it is now very difficult for young women to find part-time work whilst studying.

University education for young women

Country Cambodia
Partner Lotus Outreach
Funding £8,781
Duration 2020-2022

<https://lotusoutreach.org>



During this final year of funding the remaining six ALMT female students will complete their university education. Subjects include: business management, IT, accounting, marketing, rural development and maths. It is hoped that the graduates will enter employment or gain work experience in their chosen field.

Since the start of this project in 2020, Lotus Outreach has seen a 35% increase in the university programme. As the community has grown it has also strengthened and this year, Lotus Outreach plans to organise a young leaders' conference in Cambodia to bring together many other institutes, students and staff from schools.

Holiday activities for Ukrainian refugee children

Country Moldova
Partner Mad Aid
Funding £10,000
Duration 2021-2022

<https://www.mad-aid.org.uk>



Since the start of the war in Ukraine, Moldova has taken in the highest proportion of refugees based on its population size. Moldova, classed as a 'fragile economy', is the poorest country in Europe and internal systems are struggling to cope.

This project aims to run daily educational and social activities over the summer for 200 Ukrainian children alongside children with disabilities living at Mad Aid's Phoenix Centre. The project will help children feel more settled in their new 'temporary' homes and achieve a sense of normality. Language lessons will enable increased integration between refugee children and local residents.

Working with street children

Country Mali
Partner Mali Development Group
Funding £12,000
Duration 2022-2023

<https://www.malidg.org.uk>



Mali is one of the most deprived countries in the world and Unicef estimates that over a million children face protection issues with approximately 137,000 displaced due to ongoing civil unrest and the Covid pandemic.

Children living on the streets in Bamako have to focus on survival from day to day. With limited organisations providing support, they often go hungry. This project is providing 100 children with shelter, food, health checks and clothing whilst also using the media of art and culture to build trusting relationships, develop skills and facilitate children's re-integration into wider society.

Education for vulnerable children

Country Uganda
Partner Mtaala Foundation
Funding £6,478
Duration 2019-2023

<https://www.mtaalafoundation.org>



Awegys Secondary School in Uganda provides the best possible education to those who have previously been unable to attend school due to poverty, conflict, or the death of their parents.

Now in its final year, the ALMT is funding 15 educational sponsorships at Awegys School. These sponsorships provide a crucial foundation for vulnerable children and at-risk youth who have endured war, the loss of their parents, the HIV epidemic, neglect, and extreme poverty. These sponsorships benefit the whole school with contributions towards the teachers, food for staff and pupils and accommodation therefore creating a stronger learning and nurturing environment.

Classical concerts in special schools

Country United Kingdom
Partner Music for Autism
Funding £5,000
Duration 2022-2023

<https://www.osj.org.uk/osj-music-for-autism/>



Music for Autism provides professional classical music concerts in schools for children with Special Educational Needs (SEN). This experience can improve communication skills and have a hugely positive impact on their wellbeing.

The ALMT grant enables Music for Autism to continue to develop their resources and provides five days of classical concerts in Special Schools in Oxfordshire. The concerts allow young people with SEN to engage with live music, express themselves with spontaneous dance and movement and improve their mood and wellbeing. Each concert day consists of three workshops and reaches 100 young people.

Numeracy tuition for primary children

Country United Kingdom
Partner Quest for Learning
Funding £4,728
Duration 2021-2022

<https://questforlearning.org.uk>



Quest for Learning works collaboratively with local schools in Oxfordshire to help reduce the attainment gap between disadvantaged children and their peers. Since the Covid-19 pandemic, disadvantaged pupils are ending primary school approximately 16 months behind their peers.

This project provides targeted work with 24 children from disadvantaged backgrounds and struggling with mental maths in three Oxford schools. Pupils will gain increased confidence with maths and greater fluency with coding and encoding mathematical language.

Early years support and parenting programme

Country United Kingdom
Partner Restore Hope
Funding £19,036
Duration 2022-2023

<https://restorehopelatimer.org>



Restore Hope wants to break the cycle of reduced social mobility in the Chilterns by providing intervention from birth so that disadvantaged children can have happy, social and productive lives.

The Early Years programme will work with 120 participants during the year and deliver six 'Circle of Security' parenting courses, alongside a parent and toddler group: Hope Tots. The programme aims to: improve behaviour in children; develop their ability to separate well from parents; improve peer support and social networks; enable parents to actively invest in supporting other families and improve their ability to self-reflect and ask for help.

Apprenticeships for young people with disabilities

Country Rwanda
Partner Rwanda Action
Funding £12,558
Duration 2022-2023

<https://www.rwanda-action.org>



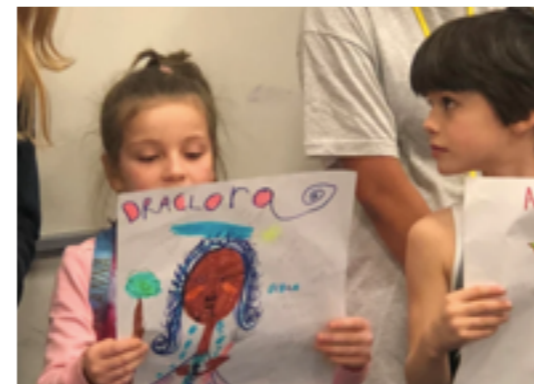
In rural areas of Rwanda disability is not well understood and it is a sad fact that even if children with a disability complete school they find it impossible to find paid employment and hence a route to independence. Rwanda Action has therefore built the Alivera Village which is designed to give 32 young people with disabilities work experience prior to helping them to find employment or setting up their own enterprise projects.

The ALMT funding is for the living expenses of 24 apprentices living in the village during the first year of the project along with a contribution to running costs of the farm and village overall with 12 going on to paid employment in the community.

Literacy tuition for primary children

Country United Kingdom
Partner SCEC
Funding £7,499
Duration 2019-2023

<https://scec-uk.org>



SCEC provide Saturday morning supplementary and enrichment classes at Dulwich College, London. The ALMT grant for the Year 3 literacy scheme has been running since 2019 with 50 children on the roll drawn from a dozen local primary schools. The children are taught in four classes by experienced primary trained tutors. Every child has a volunteer Year 10 (14-15 year old) JAGS pupil working alongside them acting as their mentor.

The project aims to reduce the attainment gap for children from disadvantaged backgrounds by ensuring that 35% of attendees are from families eligible for free school meals.

School equipment for primary schools

Country Tanzania
Partner School in a Bag
Funding £9,878
Duration 2022-2023

<https://www.schoolinabag.org>



School in a Bag provides bright red rucksacks full of essential resources that enable disadvantaged children worldwide to write, draw, colour, calculate, eat, drink, wash and above all, learn. In Tanzania, 68% of the population live below the poverty line and parents are unable to afford equipment for school.

This project is providing 350 School Bags, Lifestraws and tins of maize for children aged 7-14 years at primary schools in the Iringa area. SchoolBags are developed 'in-country' with most funds invested directly into the local economy. The inclusion of LifeStraws in the school bags will enable children to access water which is 99.9% free of parasites and bacteria.

Physio and occupational therapy for children with disabilities

Country Uganda
Partner Soft Power Education
Funding £18,908
Duration 2022-2023

<https://softpowerededucation.com>



Soft Power Education (SPE) works with families in Uganda providing free physiotherapy and occupational therapy for children with disabilities. Now entering its third year of funding with the ALMT, this project will provide at least two therapy sessions each month for 100 children with disabilities at clinics across the district. Fifty six children will also receive assistive resources to help with their therapy.

This year SPE will also offer workshops for 200 parents/ carers which aim to reduce isolation, improve their understanding of specific disabilities and empower them to provide better care for their child. Fifteen parents will also attend vocational training with BISS Bakeries.

Tower Hamlets' year of play

Country United Kingdom
Partner SportInspired
Funding £12,509
Duration 2021-2022



SportInspired provides fun, free sports experiences that unite communities and improve the physical and mental wellbeing of children living in the UK's most deprived places. This project tackles inactivity in children by running a fun, year-long sports programme for 200 primary children in Year 4 in Tower Hamlets; a borough with one of the highest percentages of children living in poverty.

Over 20 weeks, the project brings children together to grow confidence, make friendships and learn new skills through participation in sport and physical activity.

The Greenpower Project

Country United Kingdom
Partner Sylva Beaufoy Centre
Funding £10,800
Duration 2022-2023

<https://sylviabeaufoy.org>



The Sylva Beaufoy Centre (SBC) provides a much needed facility in a rural area for young people aged 9-19 who have limited opportunities for positive activities. The project will enable 45 young people aged 11-16 to build, develop and race electric cars.

The team work together each week in the development of the vehicles, whilst also forming cohesive and supportive teams. They then attend race days across the country, with an international final taking place in October. The project also works closely with local schools to encourage more girls into Science, Technology, Engineering and Maths (STEM) subjects.

Inclusive summer theatre masterclasses

Country United Kingdom
Partner The Theatre Shed
Funding £3,187
Duration 2022-2023

<https://thetheatreshed.co.uk>



Founded in 2005 The Theatre Shed (TTS) is a place where young people of all abilities come together to use the power of drama, music and dance to have fun, build confidence and develop their creativity. Many of the disabled members have limited opportunities to socialise without their carers and become isolated. As a result, these young people have limited aspirations.

During August TTS will run 10 days of performing arts and craft activities, including lunch for 60 young people at the White Hill Centre in Chesham. Young people will be able to choose which activity they want to engage in based on their needs and interests.

The Avenues youth holiday programme

Country United Kingdom
Partner The Avenues
Funding £9,762
Duration 2021-2022

<https://avenues.org.uk>



Following a successful first year, ALMT funding will provide 8 days of activities during the Easter Holidays in 2022 for up to 100 young people from a deprived area of North Westminster. The programme will focus on fitness, providing daily structure and support, developing positive attitudes and serving daily healthy lunches.

Activities take place in the professional kitchen, dance studio, sports hall, classroom, art and design studio, music studio and radio broadcasting suite. Alongside socialisation, fitness and skills activities, the qualified and experienced team of youth workers run workshops and facilitated discussions on mental wellbeing.

Speech and language support for primary children

Country United Kingdom
Partner Thorney Close Primary School
Funding £9,485
Duration 2021-2022



Thorney Close Primary School is based in a deprived area of Sunderland with many families living in poverty. Following the pandemic the school has seen a rise in children with speech and language difficulties entering the school. This project provided targeted speech and language support for children alongside an early-years reading programme.

A local partner organisation, Norah's North Pole, works with schools to identify families who are struggling the most financially and then buys presents for children so that they have something to open on Christmas day.

Vocational training in Nairobi's informal settlements

Country Kenya
Partner Tushinde
Funding £23,060
Duration 2021-2022

<https://tushinde.org.uk>



Tushinde provides a unique model of family strengthening and child protection in the Mathare and Kiambu slums of Nairobi, Kenya. This project will enable Tushinde to build on the first phase of work and fully embed the youth programme in the community.

The final year aims to build on the success of the first grant empowering 100 young people to overcome the challenges they face. The project will offer support with nutrition, housing, access to school, vocational training, and psychosocial support so that young people can realise their rights and thrive.

Water and sanitation for schools

Country Mozambique
Partner Village Water
Funding £15,000
Duration 2021-2024

<https://villagewater.org>



Many schools in Mozambique have no safe water supply and poor or non-existent sanitation or hand washing facilities. This three year programme will enable Village Water to provide solar powered systems, toilets, showers and hand washing facilities, hygiene promotion and Covid-19 messaging for approximately 8000 pupils and teachers in three schools.

This project will improve health and wellbeing, reduce absences due to waterborne infections and increase girls' attendance through washroom facilities, menstrual health promotion and production of reusable sanitary towels.

Responding to Global Events: projects funded outside scheduled board meetings

Educational welcome packs for Afghan refugees <https://www.reuk.org>

Country United Kingdom
Partner Refugee Education UK
Funding £9,513
Duration 2021-2022



Following the evacuation of Afghanistan in August 2021, over 2,200 children arrived in the UK and REUK identified that there was an urgent need to respond to their educational needs. This project created and distributed over 2,865 educational welcome packs in English, Dari and Pashto to newly settled families and successfully increased understanding about the UK system. It also ran online training for schools and Local Authorities about how to support refugee families best.

This project triggered a longer term programme of work within REUK for newly settled families which was extended to reach Ukrainian families in 2022.

Trauma packs for hospitals <https://www.saveachild.uk>

Country Ukraine
Partner Save a Child
Funding £5,000
Duration 2022



The war in Ukraine created a humanitarian crisis and medical supply chains across the country were disrupted or destroyed particularly in besieged areas. Save a Child Global Paediatric Network provides a high-impact, free of charge, app-based, telemedicine platform which enables a network of paediatric specialists to assist in remote consultations in besieged or remote areas. ALMT funding supported Save a Child to visit the region and create links with hospitals in Ukraine. The team identified, sourced and delivered a list of supplies, including diabetic, cancer and cardiac medicines and trauma packs for blast injuries to a hospital in Kyiv in late April.

Holiday activities for Ukrainian Refugees

Country Poland
Partner Slowianka Leisure Centre
Funding £47,470
Duration 2022



Gorzow is a small town with a population of 122,000 in Western Poland. Following the outbreak of war in Ukraine, the town saw a huge influx of Ukrainian refugees.

During the eight-week summer holidays there were limited opportunities for activity and so the Slowianka Leisure Centre ran a daily Summer camp and swimming programme, integrating 425 Ukrainian and Polish children. Whilst having fun, Polish language skills improved and enabling Ukrainian children to feel more settled, achieve a degree of normality and reduce a sense of isolation.

Balance Sheet As at 30th September 2022

I report on the accounts of the Trust for the year ended September 2022 which are set out on the following pages.

Respective responsibilities of Trustees and examiner

The charity's Trustees are responsible for the preparation of the accounts.

The charity's Trustees consider that:

- an audit is not required for this year under section 144(2) of the Charities Act 2011 (the 2011 Act)
- an independent examination is needed.

It is my responsibility to:

- examine the accounts under section 145 of the 2011 Act
- to follow the procedures laid down in the general Directions given by the Charity Commission under section 145(5)(b) of the 2011 Act
- state whether particular matters have come to my attention.

Basis of independent examiner's report

My examination was carried out in accordance with the general Directions given by the Charity Commission. An examination includes a review of the accounting records kept by the charity and a comparison of the accounts presented with those records. It also includes consideration of any unusual items or disclosures in the accounts and seeking explanations from you as Trustees concerning any such matters. The procedures undertaken do not provide all the evidence that would be required in an audit, and consequently no opinion is given as to whether the accounts present a 'true and fair view' and the report is limited to those matters set out in the statement below.

Independent examiner's statement

In connection with my examination, no matter has come to my attention:

1. which gives me reasonable cause to believe that in any material respect the requirements:
 - a. to keep accounting records in accordance with section 130 of the 2011 Act: and
 - b. to prepare accounts which accord with the accounting records and comply with the accounting requirements of the 2011 Act

have not been met; or

2. to which, in my opinion, attention should be drawn in order to enable a proper understanding of the accounts to be reached.

J.D.Blythe FCA

206 Upper Richmond Road West
London SW14 8AH

25th July 2023

Note	2022		2021	
	£	£	£	£
FIXED ASSETS				
Tangible assets		0		0
CURRENT ASSETS				
Debtors	0		0	
Cash at bank and in hand	335,447		349,280	
	<u>335,447</u>		<u>349,280</u>	
CREDITORS: amounts falling due within one year	<u>0</u>		<u>0</u>	
NET CURRENT ASSETS		<u>335,447</u>		<u>349,280</u>
TOTAL ASSETS LESS CURRENT LIABILITIES		335,447		349,280
CREDITORS: amounts falling due after one year		0		0
NET ASSETS		<u>335,447</u>		<u>349,280</u>
FUNDS				
Unrestricted funds:				
General funds		320,478		296,095
Restricted funds:				
Bereavement fund	19,073		21,218	
Co-Funding Fund	(4,104)		31,966	
Support	<u>0</u>		<u>0</u>	
		14,969		53,184
		<u>335,447</u>		<u>349,279</u>

The financial statements were approved, and authorised for issue, by the Trustees on 25th July 2023 and signed on their behalf by:



Nick Lawson



Jonathan Potter

Statement of Financial Activities for the year ended 30th September 2022

Notes to the Financial Statements for the year ended 30th September 2022

	Note	Unrestricted Fund 2022 £	Bereavement Fund 2022 £	Co-Funding Fund 2022 £	Support Fund 2022 £	Total Funds 2022 £	Total Funds 2021 £
INCOMING RESOURCES							
Incoming resources from generated funds:							
Voluntary income	2	89,627	10,250	345,957	48,500	494,334	412,708
Activities for generating funds	3	11,179		14,006		25,185	97,271
Investment income	4	103				103	15
Trusts and Foundations/Schools and Universities	5			14,145		14,145	20,327
Voluntary income for the Optikey partnership	6					0	10,000
Voluntary Income for the Gorzow partnership	7			35,455		35,455	
Gift Aid		28,022			13,169	41,191	59,579
TOTAL INCOMING RESOURCES		128,931	10,250	409,563	61,669	610,414	599,900
RESOURCES EXPENDED							
Cost of generating voluntary income	8				728	728	638
Costs of generating funds					728	728	638
Costs of Charitable activities:							
Grant Giving	9	104,549		398,163		502,712	469,566
Transfer of funds to the Optikey partnership	8					0	0
Transfer of funds to the Gorzow Partnership	8			47,470		47,470	
Bereavement Services	8,10		12,395			12,395	12,180
Support costs	8,10				60,941	60,941	59,538
Governance costs							
Total Costs of Charitable activities:		104,549	12,395	445,633	60,941	623,517	541,284
TOTAL RESOURCES EXPENDED		104,549	12,395	445,633	61,669	624,246	541,922
NET MOVEMENT IN FUNDS		24,382	-2,145	-36,069	0	-13,832	57,978
Inter fund transfer							
TOTAL FUNDS AT 1 OCTOBER 2021		296,094	21,218	31,967	0	349,279	291,301
TOTAL FUNDS AT 30 SEPTEMBER 2022		320,476	19,073.00	-4,102	0	335,447	349,279

1. ACCOUNTING POLICIES

Basis of preparation of financial statements

The financial statements have been prepared under the historical cost convention and in accordance with applicable accounting standards and the Charities SORP (Statement of Recommended Practice).

Fund accounting

General funds are unrestricted funds which are available for use at the discretion of the Trustees in furtherance of the general objects of the Charity and which have not been designated for other purposes.

Designated funds comprise unrestricted funds that have been set aside by the Trustees for particular purposes. The aim and use of each designated fund is set out in the notes to the financial statements.

Restricted funds are funds which are to be used in accordance with specific restrictions imposed by donors which have been raised by the Charity for particular purposes. The cost of raising and administering such funds are charged against the specific fund. The aim and use of each restricted fund is set out in the notes to the financial statements.

Income Tax recoverable

Income Tax recoverable in relation to investment income or Gift Aid donations is recognised at the time the relevant income is receivable.

Income Tax reclaimed on donations from individuals is included as unrestricted unless the donor requests that it is also restricted as part of the donation.

Incoming resources

All incoming resources are included in the Statement of Financial Activities when the Charity is legally entitled to the income and the amount can be quantified with reasonable accuracy.

Gifts in kind donated for distribution are included at valuation and recognised as income when they are distributed. Donated facilities are included at the value to the Charity where this can be quantified and a third party is bearing the cost. No amounts are included in the financial statements for services donated by volunteers.

Resources expended

All expenditure is accounted for on an accruals basis and has been included under expense categories that aggregate all costs for allocation to activities.

As the Trust is not VAT registered, all costs are shown as inclusive of VAT.

Notes to the Financial Statements for the year ended 30th September 2022

2. VOLUNTARY INCOME

	Unrestricted Funds 2022 £	Restricted Funds 2022 £	Total Funds 2022 £	Total Funds 2021 £
Donations:				
Individuals	71,557		71,557	80,357
Gift Aid	28,022	13,169	41,191	59,579
Support Cost contributions		48,500	48,500	41,500
	99,580	61,669	161,248	181,436
Schools and Universities				
Corporate	28,320	26,357	54,676	57,431
Co-funding (see below)		319,601	319,601	241,280
	127,899	407,626	535,525	480,147

Co-funding enables our donors to finance specific projects

3. ACTIVITIES FOR GENERATING FUNDS

	Unrestricted Funds 2022 £	Restricted Funds 2022 £	Total Funds 2022 £	Total Funds 2021 £
Events - Co-Funding Fund		14,006	14,006	66,145
Events - Bereavement fund		-	-	-
Events - Gift Aid		-	-	-
Events - general	11,179		11,179	23,265
	11,179	14,006	25,185	89,410

4. INVESTMENT INCOME

	2022 £	2021 £
Interest receivable from:		
Cash at bank	103	15
	103	15

5. TRUSTS AND FOUNDATIONS

	Unrestricted Funds 2022 £	Restricted Funds 2022 £	Total Funds 2022 £	Total Funds 2021 £
Trusts and Foundations		14,145	14,145	15,327
School and Universities			0	5,000
	-	14,145	14,145	20,327

6. OPTIKEY PARTNERSHIP

	Unrestricted Funds 2022 £	Restricted Funds 2022 £	Total Funds 2022 £	Total Funds 2021 £
Individuals			0	10,000
Corporate			0	0
Gift Aid			0	0
Trusts and Foundations/Schools and Universities			0	0
	-	-	-	10,000

The ALMT partnered with Optikey to fundraise monies needed to develop the work of eye tracking software for people with movement limiting illness and disability. Funds held from 2021 waiting to transfer once Optikey is registered with the charity commission.

7. GORSOW PARTNERSHIP

	Unrestricted Funds 2022 £	Restricted Funds 2022 £	Total Funds 2022 £	Total Funds 2021 £
Individuals		20,455	20,455	0
Corporate		15,000	15,000	0
Gift Aid			0	0
Trusts and Foundations/Schools and Universities			0	0
	-	35,455	35,455	10,000

8. RESOURCES EXPENDED

	Staff Costs 2022	Grants Given 2022	Support Costs 2022	Total 2022	Total 2021
Grants (see Note 8)		502,712		502,712	469,566
Optikey				-	-
Gorsow Partnership Fund (Slowianka)		47,470		47,470	-
Bereavement Counselling	12,395			12,395	12,180
Total charitable expenditure	12,395	550,182	-	562,577	481,746
Costs of generating funds			728	728	638
Support Costs	56,254		4,686	60,941	59,537
Governance Costs				-	-
	68,649	550,182	5,415	624,246	541,921

Funds held for Optikey from 2021 waiting to transfer once Optikey is registered with the Charity Commission

Notes to the Financial Statements for the year ended 30th September 2022

9. GRANTS

	Unrestricted Fund 2022 £	Co-Fund 2022 £	Total 2022 £	Total 2021 £
ACE Africa			-	22,707
Achieve Change Engagement	144	15,480	15,624	5,750
Acoms		20,000	20,000	16,979
Acton Youth Association			-	1,200
AfriKids	3,550	5,325	8,875	-
All Ears Cambodia	760	15,141	15,901	-
Alsama Project		13,974	13,974	-
Apart of Me	8,000	12,000	20,000	-
Bashley Road			-	8,528
Become			-	14,400
Ben Kinsella Trust			-	17,500
BOSP			-	36,519
Burkina Health Foundation			-	19,877
Carers Worldwide		13,468	13,468	-
Chance to Shine		22,500	22,500	22,500
Chess in Schools and Communities	5,400	8,100	13,500	13,500
Child hope	7,462	11,192	18,654	18,197
Children on the Edge	9,723	14,585	24,308	5,000
City Pay it Forward			-	10,389
Didcot Train	8,434	11,522	19,956	-
Drive Forward Foundation			-	12,000
Egmont Trust	4,806	8,167	12,973	10,070
Epic Partners			-	24,263
Eastside Young Leaders Academy			-	3,000
Footsteps Foundation			-	5,000
Hull Children's University	134	14,986	15,120	17,090
Immediate Theatre	638	12,118	12,756	14,000
Katherine Low Settlement	250	14,470	14,720	4,350
Linda Norgrove Foundation			27,200	-
Lotus Outreach	2,082	6,698	8,781	14,481
MAD-Aid		10,000	10,000	-
Magic Breakfast			-	16,500
Mali Development Group	4,800	7,200	12,000	-
Miracles			-	28,000
Mtaala Foundation	2,590	3,888	6,478	-
Music for Autism	2,000	3,000	5,000	12,000
Quest for Learning	1,891	2,837	4,728	-
Refugee Education UK		9,513	9,513	23,600
Restore Hope	3,821	15,215	19,036	3,800
Rwanda Action	5,023	7,535	12,558	-
Save a Child	5,000		5,000	-
SCEC		7,499	7,499	-
School in a Bag	7	9,871	9,878	-
Soft Power Education		18,908	18,908	-
SportInspired	0	12,509	12,509	-
Street Life			-	12,000
Sylvia Beaufoy	4,300	6,500	10,800	-
Theatre Shed	26	3,161	3,187	8,640
The Avenues		9,762	9,762	9,762
The Bay Food Bank			-	2,500
Thorney Close and Norah's North Pole	4,485	5,000	9,485	-
Tushinde	9,224	13,836	23,060	17,076
Village Water		15,000	15,000	-
World Child Cancer			-	18,388
	94,549	408,163	502,712	469,566

10. STAFF NUMBERS AND COSTS

	2022 £	2021 £
Wages and salaries	56,254	55,086
Bereavement Services	12,395	12,180
	£ 68,649	£ 67,266

During the year there was 0 (2021: 0) full time members of staff, 1 Bereavement Counsellor, 0 consultants (2021:1), and 2 (2021: 2) part time members of staff

Thank you

**Thank you to everyone we work with,
our charity partners, all of our co-funders, and the
following volunteers, trusts and foundations and
companies:**

John Lawson

Jonathan Groom

Naveed Haque

The Rosemarie Nathanson Charitable Trust

The Mac Bevan Charitable Trust

RenaissanceRe

Coltrane Asset Management

Sona Asset Management

Sandgrove Capital

Goldman Sachs

Kingston Estates





admin@almt.org