



Registered charity number 1117735

Kate Cavelle  
Edward Hutton  
Kara Lawson  
Nick Lawson

Jonny Potter  
Wasim Rehman  
Katie Stringer  
Alex de Winton

**Trustees**

Wedge House, 38-40 Blackfriars Road  
Southwark, London  
SE1 8PB

**Registered office**

1117735

**Registered charity number**

**Report and financial statements**

**Angus Lawson Memorial Trust**

**For the year ended 30 September 2013**

**Legal and administrative information**

**Who, what, why and where**

**October 2012 - September 2013**



Legal and administrative information	1
Annual report	2
Independent examiner's report	10
Statement of financial activities	11
Balance sheet	12
Notes to the financial statements	13



HSBC  
100 Old Broad Street  
London  
EC2N 1BG

**Bankers**

kiddrapinet, Thames House  
Castle Street  
High Wycombe  
HP13 6RZ

**Solicitors**



us **evolving to suit the needs of all of those involved in our network** from the child receiving an education in Swaziland, to the individual running the London Marathon.

I like to think of the ALMT as a co-operative of friends and this is the reason we use the strapline 'Bringing donor and organisation together'. We see some amazing charities of a size where they are extremely worthy but a long way away from critical mass so, this year, we began granting more than just money, we began sharing our skills with our partners, offering **pro-bono advice and support** to those who need it. We have implemented databases, provided fundraising advice and support and volunteered at events.

Our supporters have always entrusted us with their donations, knowing that their money will go to one of our many worthy partners but, looking forward, **we would like to invite you to know exactly where, why and who** your money supported and how.

I continue to feel immense pride in what the ALMT is achieving day by day and the people it is touching along the way.



Nick Lawson



**THE ANGUS LAWSON**  
MEMORIAL TRUST



Funding decisions are made during three Trustees' meetings per year by an **experienced board of professionals** representing skills from accountancy, corporate social responsibility (CSR), finance and investments, and the Third Sector.

**Skill sharing grants** - a concept where the **ALMT can offer advice and support** in areas such as database management and implementation and fundraising. These non-monetary grants are available to existing and new partners as well as those not receiving financial support. Applications are accepted in the same way as those applying for funding.

**Co-Funding** – The ALMT actively encourages responsible giving and has begun to invite supporters, donors and friends to get involved. With an ever growing portfolio of co-funded partnerships, **co-funding is allowing donors to directly support a project** while ALMT does the leg work. The Trust sources, researches and liaises with a partner and shares the cost of the project.

**What we do - bringing donor and organisation together**

**PRINCIPAL ACTIVITIES**

**How it happens - supporting projects around the world**

**2**

**Nick Lawson**

**ALMT Founder**

**Message from the Chair**

By the close of 2013, after seven full years, the ALMT has engaged globally in more than 60 projects with 40 partners in 21 countries. Highlights of the year for me include launching a new website, speaking in the House of Commons with the ALMT's amazing bereavement counsellor Jenni Thomas OBE and Keith Vas MP, following the journey as our five marathon runners raised over £50k and **inviting more people into our network** as co-funders and recipients of our skill sharing grants.

I think charitable giving is at a crossroads and people are changing the way they donate both their time and their money. No one would blindly invest in a company with their own money unless they knew exactly what the company did and, as such, why would you give to a charity unless you knew exactly where your money was going and what it was achieving? This year, the ALMT has worked alongside individuals by inviting them to co-fund, **an initiative where we can share our knowledge, processes and capital** to achieve the project aims.

Many people want to give more efficiently and more productively and we want our donors to have a more **transparent and potentially hands on** role. In the beginning we said we would make sure there would be no cost to the donor of each donation and, because of the generosity of the trustees, I can still say that every £1 donated goes directly to our partners.

We are on the next leg of our journey and that leg is



**Grant Making** - the ALMT makes **targeted grants to organisations working towards its shared mission** to mitigate the suffering of children internationally. Potential partners must display stringent report writing, measurable results and have exceptional monitoring and evaluation processes.

**Skill sharing grants** - a concept where the **ALMT offer advice and support** in areas such as database management and implementation and fundraising. These non-monetary grants are available to existing and new partners as well as those not receiving financial support.

**Co-Funding** – The ALMT actively encourages responsible giving and has begun to invite supporters, donors and friends to get involved. With an ever growing portfolio of co-funded partnerships, **co-funding is allowing donors to directly support a project** while ALMT does the leg work. The Trust sources, researches and liaises with a partner and shares the cost of the project with the donor.





## THE ALMT BOARD

The ALMT is a UK registered charity, number 1117735, governed by its Declaration of Trust and its Articles of Association. Keeping Kids Company UK, registered charity number 1068298, generously provided the Trust with office space in kind and Blythe Tax has produced the ALMT annual accounts on a pro-bono basis.

### Founders

- Nick Lawson** - Founder and Chair
- Kara Lawson** - Founder

### Patrons

- Jenni Thomas OBE** - Patron
- Camila Batmanghelidjh** - Patron

### Staff

- Silvie Wallington** - Trust Director  
-March 2011 - Present

With the completion of the five year review in 2012, and the organisation and restructuring of the Trust as a whole, the ALMT Board of Trustees made a decision to make Silvie Wallington Trust Director. The Trustees also decided not to hire any extra members of staff for the foreseeable future which would allow for a more streamline and economically run Trust.



## SKILL SHARING

The ALMT supported the following organisations with pro bono support in 2012-13. The ALMT **pro bono advice and support service is open to solicited requests** and applications are accepted on a rolling basis. Specialities include database support, particularly in the use of the Salesforce CRM, fundraising strategy, including corporate support and major donor advice, and basic book keeping, administration and infrastructure development.

- Mtaala Foundation** – Strategy advice and support - ongoing
- HVP UK** – data cleansing and database implementation - complete
- Facing the World** – Data cleansing and database implementation - ongoing
- AfriKids** – Database advice and demonstration - complete

The ALMT staff members have also provided fundraising advice and support to individuals and friends of the Trust.

The people behind the ALMT

## Governance

Keeping everything running smoothly



## CHANGES TO THE TEAM

New trustees can be recommended by an existing Board or staff member and elected at a Trustees' meeting. Katie Stringer re-joined the Board and also became a member of the Partners' Committee.

### Trustees

- Kate Cavelle** -Trustee  
-Former Head of CSR, Deutsche Bank
- Alex de Winton**-Trustee/Partners' Committee  
-Founder, the De Winton Trust
- Edward Hutton** -Trustee  
-Principal, Campbell Luytens
- Jonny Potter** -Trustee/Treasurer  
-Snr Managing Director, Deutsche Bank
- Wasim Rehman**-Trustee/Partners' Committee  
-Director, FWE Group
- Katie Stringer** -Trustee/Partners Committee  
-Former Partnerships' Manager, ALMT  
-March 2013-Present

It's not all about the money - going the extra mile

## Support sustainability and span

Forming partnerships - where we are making an impact



## THE ALMT FOOTPRINT

The ALMT accepts solicited requests for funding and the skills sharing service from registered charities in the following areas:

- Bereavement and palliative care for families, adults, children and young people
- Projects/initiatives that enable disadvantaged or vulnerable children and young people to participate fully in society
- Educational scholarships and learning support for children and young people

This year, the ALMT has dispersed grants of £103,503 to 11 partner organisations in six different countries. Each partner is required to deliver **social and budgetary reports** to the ALMT as set out in the Memorandums of Understanding signed by representatives from each party. The Board also actively encourages partners to apply to other grant making bodies and seek co-funding opportunities. The ALMT's skill sharing service has delivered the equivalent of circa £3,000 of pro bono advice and support, and targeted fundraising at events has increased ALMT grant making by £7380.





## ACE AFRICA

School equipment and sanitary products for girls

ALMT and the Mac Bevan Smile Fund joined forces to co-fund 240 vulnerable children to receive a school uniform and 1,000 girls to receive a monthly supply of sanitary towels in Kenya.

The grant also covered the cost of a child counsellor who provides the support and guidance that is so often needed in these remote rural areas of Kenya, where life can be a challenge.

Fundraising at the annual Burns Night dinner helped fund ACE Africa in their fight to treat and prevent the spread of the jiggers (flea) parasite in western Kenya



**'The ALMT and Mac Bevan Smile Fund are helping children turn their lives around by enabling them to access the education they deserve'**

**Lizzy Epsley - Fundraising and Comms Manager**



## ALIVE AND KICKING

Football and sport for visually impaired children

With support from ALMT, Alive & Kicking ran a series of coaching sessions and sports tournaments for visually impaired children in Kenya. The project provided these children with access to organised sport, giving them confidence, self-esteem and a feeling of solidarity, as well as three days of enjoyment.

The cost of sound balls in Kenya is normally a major barrier to participation in blind football. 300 Alive & Kicking sound balls were specifically made for this initiative, with at least 10 balls given to each participating school. A total of 140 balls were distributed to the participating schools based on student numbers.

**'507 young Kenyans were able to fulfil their right to play, which is so often denied to them through no fault of their own'.**

**Melanie Tarrant - Head of Fundraising**

Building sustainable futures

Partners

You can make a difference



## AFRICAN VILLAGE SCHOOL

Chickens, cows and pigs to sustain a community

Fundraising at the annual Burns Night dinner helped fund the feeding programme, that currently feeds up to 200 children daily, with 6 months' supply of calor gas for cooking

The African Village School Fund (AVSF) have facilitated education, health promotion, nutrition and growth of economy and infrastructure in the area known as Ekudzeni in Swaziland.

The ALMT has supported this organisation since its inception and is proud to have been involved with Mungo's primary school, transportation, bridge building and the feeding programme. With each grant, this community moves one step closer towards sustainability.

**'The ALMT are approachable, resourceful and they make things happen'**

**Lynn Nestor - Founder**

Made in Africa, by Africa, for Africa

Partners

St Anns and Sneinton Football Club



## EPIC PARTNERS

A new leader for a struggling football club

SAS FC believes that poverty should not be a barrier to playing organised football. The ALMT is proud to be supporting the club by working together in implementing a stronger infrastructure and staff base to lift SAS FC's profile and volunteer involvement in the local area.

With support from individual donors, the ALMT are also funding the purchase of new kits for the team. A team strip evokes pride and belonging and also unites the team and creates a stonger bond and team spirit during matches.

This co-funded partnership, designed to last 3 years, will follow the club's successes and monitor the achievements and advancements in volunteer led coaching sessions.

**'The ALMT is helping to enable our club to become the community football club that we are all working towards.'**

**Joe Cooper - Football Development Officer**







## IMPACT INITIATIVES

### Whithawk After School Project (WASP)

Whitehawk After Schools Project (WASP) youth club is part of Impact Initiative's project portfolio. This co-funded partnership is providing a safe place where young people can meet each other and learn new skills including cooking, sports and social skills.

WASP is a fun place for children to go after school where they learn skills through playing and organised activities. Expert staff can work with individual children on specific issues too.

Successes for year one include the appointment of a Youth Worker and an increase in older members of the club continuing to attend in a volunteer capacity. ALMT has provided the bridging grant that has enabled WASP to continue providing such a valuable service.



**'This funding has given us the time to make sure we are providing what is most needed and to make some key developments to the club'**

**Caroline Ridley - Operations Director**

Making a positive impact for every generation in Sussex

## Partners

Renewing hope and restoring dreams



## LOTUS OUTREACH

### Girls' access to education scholarships

ALMT-funded scholarships have enhanced the life options of at-risk girls and their families in Cambodia to reduce their vulnerability to violence and trafficking. The Girls Access To Education (GATE) partnership is now in its third year.

These scholarships not only cover the indirect costs of education such as materials, uniforms, and transportation, but also ensure the poorest families have enough to eat so the girls will not be taken out of school and put back to work.

This partnership is also run with the support and skills of the Cambodian Women's Crisis Centre. Through engaging community volunteers and building culturally-relevant prevention programmes, GATE is able to further stem the tide of human trafficking,

**'The ALMT has turned tragedy into hope for thousands of children. Thank you for your unwavering commitment to making our world a better place'**

**Erika Keaveney - Executive Director**



## OPERATION SMILE

### World Care Programme

Working hand in hand with Operation Smile's World Care Programme, the Mac Bevan Smile Fund was developed by the ALMT and a few close supporters of the Trust. The Fund exists to support those with facial deformities too severe to be treated at Operation Smile's regular clinics. It provides vital funding for the best possible patient surgery and treatment: this might mean travelling to another country and remaining there during recovery.

The Mac Bevan Smile Fund believes in fairness for all and was created by a set of individuals whose lives were improved thanks to the generosity, mentoring and friendship of Mac Bevan, a great man.



**'We couldn't ask for more committed and loyal partners to help deliver hope and smiles to children around the World'**

**Diane Julio - Foundations Executive**

The Mac Bevan Smile Fund - Fairness for all

## Partners

Change one child's life, change tens of thousands



## ONE TO ONE CHILDREN'S FUND

### Kosovo's first multi-sensory room

Approximately 20,000 children with special needs in Kosovo suffer from social exclusion in their daily life. Despite positive developments in recent years in the provision of social and family services, they are still woefully inadequate.

This partnership aims to improve the quality of care provided to circa 200 children with disabilities, through the establishment of one multi-sensory room per day care centre in two municipalities in Kosovo.

These innovative facilities are vital to provide stimulation and improve the quality of life for some of the most severely disabled children in the country.

**'Children can benefit from development of their senses with the help of this room: this development will also help them more in society'**

**Emra Jashari, Counsellor - Kosovo**





## PECKHAM SHED

### Sign language training

As a result of guests at the 2013 Burns Night pledging their donations to specific partners, the ALMT supported Peckham Shed to deliver sign language training and provide sensory equipment to use during their sessions.

Being part of something constructive and supportive helps to improve the self confidence of the young members and allow them to develop as people with strong aspirations.

Peckham Shed had to close at the end of 2013 due to lack of funds and capacity. The ALMT is extremely proud of what they achieved over their many years in operation and of the way in which they used the ALMT's grants.

**'We simply couldn't do what we do without you and your kind hearts and clever heads'**

**Rebecca Cahill Roots - Chair**



## SIBLINGS TOGETHER

### Monthly Activity Days (MADS)

Siblings Together champions, builds and strengthens relationships between brothers and sisters aged 7 -18 years, separated by the care system. The organisation uses creative activities and skilled adult support to help the young people they work with in rebuilding their sibling relationships.

Monthly Activity Days provide a monthly opportunity for regular fun, creative and educational sibling contact. The days include outdoor and indoor activities such as art workshops, photography, music, games, drama, sport, film, music, ice-skating, cinema, canal boat trips, kayaking and climbing.

In 2013 the ALMT fundraised at the annual Burns Night dinner for Siblings Together and have continued to support the MAD's programme.

**'The ALMT has helped our small charity make big differences'**

**Delma Hughes - Chair**

Anyone Everyone Theatre

Partners

Empowering young people through songwriting



## THE SONGWRITING CHARITY

### Bully Beat songwriting workshops

Bully Beat has been designed to enthuse primary aged children about the process of lyric writing, singing, music arranging and contemporary production, whilst promoting a serious anti-bullying message.

This partnership will deliver Bully Beat workshops to a minimum of 1,800 children face-to-face across 30 primary schools in the Swale district of Kent.

As well as working in mainstream schools, The Songwriting Charity works with children who have Special Educational Needs and Disabilities. Some are Looked After or Young Carers. Their workshops are about boosting the self-esteem and confidence of vulnerable, shy, isolated and marginalised young people.

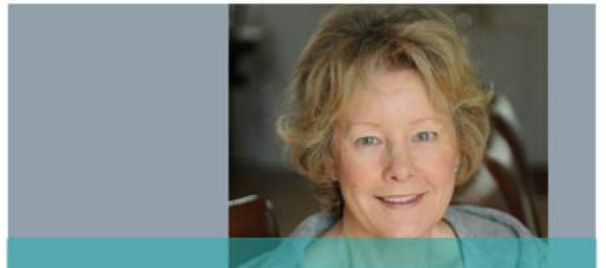
**'Some of the children are showing improved signs of confidence, they have realised that everybody has the capacity to achieve'**

**Sam Roach - Teacher**

Reuniting siblings in care and adoption UK

Partners

Grieving is about remembering, not forgetting



## GRIEF SUPPORT

### Bereavement support for families and children

The ALMT offers support to families with children who are coping with grief when someone important in their lives has suddenly and unexpectedly died or where a parent is dying. This year Jenni Thomas, who was awarded the OBE for her pioneering bereavement work in Britain, began working with Nicky Whitworth to deliver this valuable service.

The team focuses on the needs of families with children and young people facing loss and grief. The involvement of the parents or prime carer is essential.

Fundraising at the Virgin London Marathon was restricted to funding Jenni and Nicky which has secured their work with the ALMT well into 2014/15.

**'We recognise the varied ways that grieving children continue a bond with the person who has died.'**

**Jenni Thomas OBE - ALMT Grief Support**





## INCOME BREAKDOWN

Where does our money come from?

Individuals	8%	Co-funding	7%
Challenges	24%	Celebrity	5%
Events	17%	Gift Aid	8%
Corporate	7.5%	Interest	0.5%
Community	1%	Running costs	22%

Individual supporters and community groups raised an amazing £73,572.21 this year by making one off donations, taking part in challenge events, or giving through community groups. Almost £23,000 raised through the London Marathon is restricted funding to enable the ALMT to fund Jenni Thomas OBE and the Grief Support Service offered by the ALMT.

The ALMT co-funding scheme launched this year with two projects successfully co-funded with plans for more in 2013-14. This scheme encourages donations into the ALMT, while doubling the support available to ALMT partners and increasing the ALMT's reach.

**'Children are extremely lucky to be at the receiving end of your immense compassion'**  
**Camila Batmanghelidjh - Founder, Kids Company**



## CORNEY AND BARROW BARS

London city bars hosting events and fundraising

The partnership with Corney and Barrow Bars continued this year with a more structured approach. The ALMT and Corney and Barrow Bars (C&B) will nominate one ALMT partner annually to receive money raised by the staff and team at C&B. In 2012-13, the nominated charity was Peckham Shed and the fundraising total raised was £5317.

Unfortunately, due to difficulty finding core income, Peckham Shed had to close at the end of 2013. The ALMT are extremely proud of what Peckham Shed achieved with the money granted and are sad to see a valuable service cease to exist in Peckham.

The money raised from 2012-13 through the C&B partnership will be distributed to ALMT partners through the normal funding avenue and a new partner will be selected for 2013-14.

**'Adding £1 to your bill at Christmas is a really easy thing to do, and we love watching the money come in!'**  
**Caroline Dobson - Marketing Manager, C&B Bars**

Making your money go further

## Income in brief

ALMT supporters go the extra mile



## OUR SUPPORTERS

Who makes it happen?

Rachel Riley proved to be an amazing celebrity ambassador raising over £11,000 by taking part in television games shows Tipping Point and 5 Minutes to a Fortune.

Income from the Trustees exceeded the ALMT's running costs this year leaving a surplus of restricted income to cover any unforeseen support costs, extra staff or equipment needed. This income ensures that the ALMT does not use money received from donors to cover core costs such as salaries and general administration of the Trust.

Corporate support was strong with companies offering gifts in kind for events. Corney and Barrow Bars worked hard to raise an amazing £5,317 by running events and their Christmas appeal.

**'Everyone at the ALMT cannot say thank you enough for the support, courage and generosity of the individuals and companies that enable us to keep changing lives'**  
**Silvie Wallington - Trust Director, ALMT**

Inspiring companies to involve their staff

## Corporate Support

Matched giving and employee sponsorship



## SPONSORSHIP

Payroll giving and matching schemes

Corporate support this year also came from Astley Clarke, Foodspeed Ltd, Goldman Sachs Gives and Market Securities.

Astley Clarke London once again provided the ALMT with a beautiful and sparkly platform from which to host an event. A wine and gemmology tasting at Berry Bros brought ALMT supporters together, introduced new business to Astley Clarke and showcased the wonderful venue and amazing wines at Berry Bros and Rudd, the hosts for the evening.

The ALMT worked hard this year to encourage supporters to utilise their companies matched giving schemes and it worked, with more donations being matched than ever before.

**'With matched giving, Gift Aid and the ease of giving through payroll, donations are going so much further'**  
**Jonny Potter - Treasurer, ALMT**





## HIRE THE BARMAN

Entertaining ALMT supporters for three years

Hire the Barman have donated thousands of pounds worth of services to the ALMT over the past three years and 2012-13 was no different.

At the annual Burns Night, hosted by Cafe de Paris, the team from Hire the Barman set up and ran two bars. The welcome drinks wowed ALMT guests with a combination of rum and dry ice, creating an amazing entrance! After dinner, a second bar was available serving cocktails and giving the guests a chance to shake their own!

Every event that Hire the Barman has supported has been worked free of charge with the addition of equipment, some drinks and extra staff also as gifts in kind. They add a wow factor to our events and we don't know what we'd do without them.

**'ALMT events are great fun and we get to support an amazing charity while introducing ourselves to new people'**

**James Bishop - Managing Director, Hire the Barman**



## CHALLENGERS

Climbing, running, and biking

ALMT supporters are made up of a number of super heroes who push themselves challenge after challenge to raise money for the ALMT and its partners.

This year individuals took on the Blenheim Triathlon, the London Marathon, the London to Paris Cycle, Nightrider and the Three Peaks Challenge.

Thanks to some very special individuals, challenge events alone raised £54,670.62, almost a quarter of the ALMT's fundraising income this year. As with any one of our supporters, the ALMT always offers the opportunity to designate funds raised to a particular partner of the ALMT or the ALMT grief support.

The distance travelled by ALMT challengers in 2012-13 was a staggering 1062.35 miles, the equivalent of travelling from Land's End to John o'Groats over three times.

Mixing up the ALMT party

Corporate Support

People and companies backing the ALMT



## CSR AND THE ALMT

Gifts in kind and corporate support

Each year the ALMT meets new companies and finds new support from corporations. It's a great boost to fundraising and also engages employees.

Amathus Drinks frequently donates alcohol and soft drinks for ALMT events.

Foodspeed added the ALMT to their list of supported charities and look forward to growing the relationship. WBC, the wine box company, fundraised for the ALMT for a second year.

Berry Bros & Rudd generously donated the directors room and wine tasting free of charge.

Cafe de Paris provided raffle prizes and a number of gifts in kind for the ALMT Burns Night.

Deutsche Bank donates money raised through the rental of its bike spots and lockers.

**'Year on year, corporate support continues to amaze me, no matter how big or small, the ALMT really can make a difference with your donations'**

**Nick Lawson - Founder, ALMT**

Events and Fundraising

What does dead mean?



## JENNI THOMAS BOOK LAUNCH

A book to explain death and dying to children

The ALMT hosted a very special reception at the House of Commons celebrating its collaboration with Jenni Thomas OBE and Caroline Jay on their publication, 'What Does Dead Mean'.

The book uses the questions children ask about death and dying and will play a key role in the development of the Trust's grief services currently offered.

Keith Vaz MP sponsored the event and an early day motion, and gave a moving speech about his experiences of bereavement when he was a child. Founder of the ALMT Nick Lawson also spoke and thanked guests for attending and Jenni Thomas talked beautifully about her experiences, people she has met along the way, and hopes for the book and the role it will play in supporting children and parents with talking about their grief.

Courage and endurance shown by ALMT supporters





## BURNS NIGHT DINNER

Burns Night stand up supper at Cafe de Paris

Burns Night 2013 hosted by Cafe de Paris was a night for two great organisations to share delicious food, crazy cocktails and cringingly funny comedy from Patrick Monahan. Long term ALMT supporter Rachel Riley also took to the stage to host a fun quiz. Guests enjoyed a wonderful three course meal served up by Cafe de Paris and amazing bubbling cocktails from ALMT charity partner, Hire the Barman.

Truffle trees garnished the tables and guests were invited to take a box home at the end of the evening. Each year, Burns Night acts as a unique platform to showcase the ALMT's achievements throughout the previous year and it never fails to inspire, invigorate and interest our VIP guests.

Every year the ALMT hosts a flamboyant, fun and fantastical Burns Night Supper. For 2013, we began doing something very special, offering guests the opportunity to pledge funds to benefit some of the ALMT's partners directly.

January 2013

## BUILD ON CO-FUNDING

2012-13 was a year for the ALMT to test the water with the new co-funding scheme and we are very happy with the outcomes. At the close of the financial year, two co-funded partnerships were running.

**We hope to enhance this scheme further with a launch event, targeted marketing and increased visibility on the ALMT online media.**

## MAKE SMART INVESTMENTS

Investing is not something the ALMT wants to get wrong and, for this reason, the Trust is yet to find the right scheme in which to put our valuable funds. As well as investing, the ALMT plans to use surplus income from past years to fund more partners in 2013-14.

## PARTNERS' COMMITTEE

The Partners' Committee was formed in 2011-12 and consists of three members of the ALMT Board of Trustees. This Committee forms the middle link between application and funding decision and must meet with an applicant and then present on their application. This ensures deeper research, a greater understanding and a decision making process that is fully informed.

The seventh annual ALMT Burns Night dinner

## Events and Fundraising

## Reflection and objectives



Communities pulling out all the stops



## DOWNLEY DYNAMOS DAY

Football club presentation day with a difference

The British summer made a very welcome appearance for football club fundraiser, Dynamos Day 2013. Coaches from Downley Dynamos Junior Football Club worked hard for months, organising a presentation day with a difference.

There was no shortage of things to eat, drink and play with cake stands, a bar and even a coconut shy! The highlight of the day was the mascots race featuring Harry the Hatter from Luton FC, Harry the Hornet from Watford FC and Bodger from Wycombe Wanderers.

Harry the Hornet took the crown and helped the ALMT raise over £150 as the public placed bets on their favourite. ALMT founder Nick Lawson became auctioneer for the day with the star lot, a Manchester United 2013 squad signed football, selling for £450!

June 2013

## INDIVIDUAL DONORS

We are always looking for more people to share our experiences with and this year was a year unlike any other. Individuals raised more than ever before by challenging themselves to complete races, climb mountains and cycle hundreds of miles.

Individual donors are also becoming co-funders by designating their fundraising to a specific ALMT partner. They are then able to see every penny of their achievement work hard in delivering a project they are close to.

**We hope to expand this concept further and invite all of our individual donors to decide where we spend their money.**

## CORPORATE PARTNERSHIPS

We set out to build on our corporate partnerships in 2012-13. It was successful in that we retained and grew our existing partnerships. Corney and Barrow Bars have taken their partnership to the next level by choosing a different ALMT partner year on year, essentially leaving the ALMT to run their CSR programme. Staff engagement has increased and we look forward to pushing the team to take part in more events next year. We also attracted more gifts in kind than before and began new partnerships.

**In 2013-14, the ALMT hopes to take the smaller corporate partnerships and build on them, inspiring staff members and senior management alike.**

How could the ALMT improve?

Reflecting on achievements from the year



I report on the accounts of the Trust for the year ended 30 September 2013 which are set out on pages 11 to 13.

**Respective responsibilities of Trustees and examiner**

The charity's Trustees are responsible for the preparation of the accounts. The charity's Trustees consider that:

- an audit is not required for this year under section 144(2) of the Charities Act 2011 (the 2011 Act)
- an independent examination is needed

It is my responsibility to:

- examine the accounts under section 145 of the 2011 Act
- to follow the procedures laid down in the general Directions given by the Charity Commission under section 145(5)(b) of the 2011 Act
- state whether particular matters have come to my attention

**Basis of independent examiner's report**

My examination was carried out in accordance with the general Directions given by the Charity Commission. An examination includes a review of the accounting records kept by the charity and a comparison of the accounts presented with those records. It also includes consideration of any unusual items or disclosures in the accounts, and seeking explanations from you as Trustees concerning any such matters. The procedures undertaken do not provide all the evidence that would be required in an audit, and consequently no opinion is given as to whether the accounts present a 'true and fair view' and the report is limited to those matters set out in the statement below.

**Independent examiner's statement**

In connection with my examination, no matter has come to my attention:

(1) which gives me reasonable cause to believe that in any material respect the requirements:

- to keep accounting records in accordance with section 130 of the 2011 Act; and
- to prepare accounts which accord with the accounting records and comply with the accounting requirements of the 2011 Act

have not been met; or

(2) to which, in my opinion, attention should be drawn in order to enable a proper understanding of the accounts to be reached.

J.D.Blythe FCA  
206 Upper Richmond Road West  
London SW14 8AH

15-July-2014



## STATEMENT OF FINANCIAL ACTIVITIES

### THE ANGUS LAWSON MEMORIAL TRUST

#### STATEMENT OF FINANCIAL ACTIVITIES

For the year ended 30 September 2013

	Note	Unrestricted Fund 2013 £	Bereavement Fund 2013 £	Project Fund 2013 £	Support Fund 2013 £	Total Funds 2013 £	Total Funds 2012 £
<b>INCOMING RESOURCES</b>							
Incoming resources from generated funds:							
Voluntary income	2	78,060		15,971	51,325	145,356	254,819
Activities for generating funds	3	65,034	21,943	7,380		94,357	153,306
Investment income	4	471				471	320
Incoming resources from charitable activities						0	0
<b>TOTAL INCOMING RESOURCES</b>		<b>143,565</b>	<b>21,943</b>	<b>23,351</b>	<b>51,325</b>	<b>240,184</b>	<b>408,445</b>
<b>RESOURCES EXPENDED</b>							
Cost of generating voluntary income	5	14,822				14,822	57,554
Costs of generating funds		<b>14,822</b>	<b>0</b>	<b>0</b>	<b>0</b>	<b>14,822</b>	<b>57,554</b>
Costs of Charitable activities:	5						
Grant Giving		80,153		23,351		103,504	209,854
Bereavement Services			10,307			10,307	10,000
Support costs					38,291	38,291	10,000
Office costs		12,500				12,500	10,000
Governance costs						0	0
<b>TOTAL RESOURCES EXPENDED</b>		<b>92,653</b>	<b>10,307</b>	<b>23,351</b>	<b>38,291</b>	<b>164,602</b>	<b>297,408</b>
<b>NET MOVEMENT IN FUNDS</b>		<b>36,090</b>	<b>11,636</b>		<b>13,034</b>	<b>60,760</b>	<b>111,037</b>
TOTAL FUNDS AT 1 OCTOBER 2012		437,005				437,005	305,968
<b>TOTAL FUNDS AT 30 September 2013</b>		<b>473,095</b>	<b>11,636</b>	<b>0</b>	<b>13,034</b>	<b>497,765</b>	<b>417,005</b>

The annexed notes form part of these financial statements



# BALANCE SHEET



## THE ANGUS LAWSON MEMORIAL TRUST

### BALANCE SHEET

As at 30 September 2013

	Note	2013		2012	
		£	£	£	£
<b>FIXED ASSETS</b>					
Tangible assets			0		0
<b>CURRENT ASSETS</b>					
Debtors	13	0		0	
Cash at bank and in hand		497,765		437,004	
		<u>497,765</u>		<u>437,004</u>	
<b>CREDITORS: amounts falling due within one year</b>	14	<u>0</u>		<u>0</u>	
<b>NET CURRENT ASSETS</b>			<u>497,765</u>		<u>437,004</u>
<b>TOTAL ASSETS LESS CURRENT LIABILITIES</b>			497,765		437,004
<b>CREDITORS: amounts falling due after one year</b>			0		0
<b>NET ASSETS</b>			<u>497,765</u>		<u>437,004</u>
<b>FUNDS</b>					
Restricted funds			0		0
Unrestricted funds:					
General funds		473,095		437,004	
Bereavement fund		11,636			
Project fund					
Support	16	<u>13,034</u>			
			497,765		437,004
			<u>497,765</u>		<u>437,004</u>

The financial statements were approved, and authorised for issue, by the Trustees on date 23/7/14 and signed on their behalf by: Nick Lawson and Jonathan Potter

  
 \_\_\_\_\_ Nick Lawson  
  
 \_\_\_\_\_ Jonathan Potter

The annexed notes form part of these financial statements



# NOTES TO THE FINANCIAL STATEMENTS

## THE ANGUS LAWSON MEMORIAL TRUST

### NOTES TO THE FINANCIAL STATEMENTS For the year ended 30 September 2013

#### 1. ACCOUNTING POLICIES

##### **Basis of preparation of financial statements**

The financial statements have been prepared under the historical cost convention and in accordance with applicable accounting standards, the Charities SORP (Statement of Recommended Practice: "Accounting and Reporting by Charities (published February 2005)") and the Companies Act 2006.

The effects of the events relating to year ended 30 September 2013 which occurred before the date of the approval of the financial statements by the Trustees have been included in the financial statements to the extent required to show a true and fair view of the state of affairs at 30 September 2013 and the results for the year ended on that date.

##### **Fund accounting**

General funds are unrestricted funds which are available for use at the discretion of the Trustees in furtherance of the general objects of the Charity and which have not been designated for other purposes.

Designated funds comprise unrestricted funds that have been set aside by the Trustees for particular purposes. The aim and use of each designated fund is set out in the notes to the financial statements.

Restricted funds are funds which are to be used in accordance with specific restrictions imposed by donors which have been raised by the Charity for particular purposes. The cost of raising and administering such funds are charged against the specific fund. The aim and use of each restricted fund is set out in the notes to the financial statements.

##### **Income Tax recoverable**

Income Tax recoverable in relation to investment income or Gift Aid donations is recognised at the time the relevant income is receivable. Voluntary income includes £24,335.88 gift aid claimed relating to the period 06 April 2007 to 05 April 2010.

Income Tax reclaimed on donations from individuals is included as unrestricted unless the donor requests that it is also restricted as part of the donation.

##### **Incoming resources**

All incoming resources are included in the Statement of Financial Activities when the Charity is legally entitled to the income and the amount can be quantified with reasonable accuracy.

Gifts in kind donated for distribution are included at valuation and recognised as income when they are distributed. Donated facilities are included at the value to the Charity where this can be quantified and a third party is bearing the cost. No amounts are included in the financial statements for services donated by volunteers.

##### **Resources expended**

All expenditure is accounted for on an accruals basis and has been included under expense categories that aggregate all costs for allocation to activities.

As the Trust is not VAT registered, all costs are shown as inclusive of VAT.

#### 2. VOLUNTARY INCOME

	Unrestricted Funds 2013 £	Restricted Funds 2013 £	Total Funds 2013 £	Total Funds 2012 £
Donations:				
Individuals	47,739	-	47,739	80,372
Trustee	-	51,325	51,325	42,000
	<u>47,739</u>	<u>51,325</u>	<u>99,064</u>	<u>122,372</u>
Trusts and foundations				
Corporate	17,821	-	17,821	19,947
Gifts in kind (Note 7)	12,500	-	12,500	12,500
Co-funding (see below)	-	15,971	15,971	-
	<u>78,060</u>	<u>67,296</u>	<u>145,356</u>	<u>254,819</u>

Co-funding enables our donors to finance specific projects

#### 3. ACTIVITIES FOR GENERATING FUNDS

	Unrestricted Funds 2013 £	Restricted Funds 2013 £	Total Funds 2013 £	Total Funds 2012 £
Events - project fund		7,380	7,380	
Events - bereavement fund		21,943	21,943	
Events - general	65,034		65,034	153,306
	<u>65,034</u>	<u>29,323</u>	<u>94,357</u>	<u>153,306</u>



# NOTES TO THE FINANCIAL STATEMENTS

## THE ANGUS LAWSON MEMORIAL TRUST

### NOTES TO THE FINANCIAL STATEMENTS

For the year ended 30 September 2013

<b>4. INVESTMENT INCOME</b>		<b>2013</b>	<b>2012</b>
		£	£
Interest receivable from:			
Cash at bank		441	320
		<u>441</u>	<u>320</u>

<b>5. RESOURCES EXPENDED</b>					
	<b>Staff Costs</b>	<b>Grants given</b>	<b>Support costs</b>	<b>Total 2013</b>	<b>Total 2012</b>
	£	£	£	£	£
Grants		103,504		103,504	209,854
Bereavement Counselling	10,307			10,307	10,000
Total charitable expenditure	<u>10,307</u>	<u>103,504</u>	<u>0</u>	<u>113,811</u>	<u>219,854</u>
Costs of generating funds		14,822		14,822	57,554
Support costs	34,242		4,049	38,291	
Office costs			12,500	12,500	
Governance costs				0	0
	<u>44,549</u>	<u>118,326</u>	<u>16,549</u>	<u>179,424</u>	<u>277,408</u>

<b>6. GRANTS</b>					
	<b>General Fund</b>	<b>Project Fund</b>	<b>Total</b>	<b>Total</b>	<b>Total</b>
	2013	2013	2013	2012	2012
	£	£	£	£	£
Siblings Together - project fund		16,315	16,315	12,270	
Lotus Outreach - project fund		730	730	25,068	
Esther Benjamins Trust				2,000	
Compassion For Migrant Children				40,000	
Peckham Shed - project fund		1,200	1,200	6,875	
Dost Foundation UK				9,448	
Octavia Appeal				3,700	
Epic Partners - Unrestricted	10,351		10,351	2,500	
Epic Partners - Co-funding		10,250	10,250		
Epic Partners - project fund		200	200		
African Village School Fund - project fund		1,500	1,500	15,600	
ACE Africa	13,745		13,745		
Alive and Kicking	8,910		8,910		
Impact Initiatives - WASP - unrestricted	5,201		5,201		
Impact Initiatives - WASP - co-funding		5,201	5,201		
Mac Bevan Smile Fund - project fund		1,500	1,500		
One to One Childrens Fund	8,901		8,901		
The Nathan Timothy Foundation	19,500		19,500		
	<u>66,608</u>	<u>36,896</u>	<u>103,504</u>	<u>117,461</u>	

### 7. GIFTS IN KIND

The Trust receives a number of gifts in kind and gifts in service each year.

Gifts in kind in the form of second hand donated goods were valued with second hand resale values; all new donated goods in kind were valued per the suggested value from the donors or per equivalent value from suitable catalogues.

Gifts in service were valued per written advice from the service companies, premises provided rent free were valued by the landlord on the basis of their commercial rental value. Professional gifts in kind (e.g. legal services) have been valued on a reasonable basis and included as income for the year.

The Financial Statements have included an aggregate value of £12,500 from Kids Company (2009: £NIL, 2010: £12,500, 2011: £12,500)

Under the Statement of Recommended Practice 2005 ("Accounting and Reporting by Charities (published 2005)") these costs have been included in both incoming and outgoing resources.

In addition, the Trust receives some assistance from volunteers, which is not reflected in the financial statements. The Trustees' report refers to the value of this time.

<b>8. STAFF NUMBERS AND COSTS</b>		<b>2013</b>	<b>2012</b>
		£	£
Wages and salaries		34,242	75,439
Bereavement Services		10,307	10,000
		<u>£ 44,549</u>	<u>£ 85,439</u>

During the year there was 1 full time member of staff